



THE
IVY COMMUNITY
CHARITIES

of Prince George's County, Inc.

2023 Annual Report

*Exemplifying Excellence in
Prince George's County, MD*

Blessed is she who has believed that what the Lord
has said to her shall be accomplished! Luke 1:45

Board of Directors, Officers

President – Cheryl W. Owens
Vice President – Dr. Kristi Holden
Recording Secretary – Toni Perry
Corresponding Secretary – Brenda Cadette-Montague
Treasurer – Airienne Jeffery
Assistant Treasurer – Tracy S. Banks
Financial Secretary – Linda Washington
Assistant Financial Secretary – Donna Bowe
Parliamentarian – Rosa Page
Historian – Tanya Penny Woods
Chaplain – Nyrtha Braxton

Directors-at-Large

Rosalind Daniel-Walker
Ronnette Earle
Serenity A. Garnette
Zelmar Gordon
DeBorah Grant
Rochelle Harley
Carol Herring-Reid
Rosalyn Rice-Harris
Shirley Stewart-Tibbs
Kathy K. Waymann
Belinda Wiley
Linda Williams

Staff

Executive Director – Cheryl Petty Garnette
Deputy Executive Director – Miriamm McKinney
Facilities Manager – Rosa Page
Marketing Coordinator – Brandee Reed
Technology Coordinator – LaTisha Booth
Technology Coordinator – Shane' Lee
Program Analyst – Andrea Williamson
Special Assistant – Michelle Boone



From a tiny acorn ...



to a mighty oak

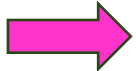
Table of Contents

Letters from the President of the Board of Directors and Executive Director	1
Charities' Strategic Path to Excellence	2
Stories of Excellence to Empower Youth and Strengthen Families	7
Forging the Path to Nonprofit Excellence for Generational Success: The Ivy VINE	19
Sustaining Excellence: Financial Highlights, Fundraising, Sponsors and Donors	21

Contact us at:
6118 Walton Avenue
Suitland, MD 20746
301-702-7312
www.iccpgc.org
info@iccpgc.org



Scan Here to
Donate to
Programs and
Scholarships



Scan Here to
Donate to The
Ivy VINE



The Ivy Community Charities of Prince George's County, Inc., earned Maryland Nonprofits' prestigious Standards for Excellence Accreditation in 2022 and celebrated the distinction at the 2023 Annual Meeting with a special presentation by Amy Coates Madsen, Maryland Nonprofits' Vice President of Programs and County Executive Angela D. Alsobrooks! (Only 16 Prince George's County nonprofits have earned the "Excellence" recognition.)





The Ivy Community Charities of Prince George's County, Inc.
6118 Walton Avenue
Suitland, MD 20746
301-702-7312

Greetings:

In 2023, the Ivy Community Charities of Prince George's County, Maryland, Inc. (Charities) celebrated its 27th year of providing needed services to the residents of Prince George's County! Established in 1986 as the philanthropic arm of the Iota Gamma Omega Chapter of Alpha Kappa Alpha Sorority, Inc., Charities has grown to a membership of over 740 members and a net worth of over \$2 million!

This year we are proud of milestones achieved in the implementation of the Ivy VINE (Village Incubator for Nonprofit Excellence). As we have been blessed with the highest nonprofit certification in the State through Maryland Nonprofits, our goal is to give back to other non-profits in the county providing management training and a physical location for six to eight organizations to operate. Six organizations were selected in our first cohort and have completed the first year of a two-year free formalized training program with the support of an assigned coach. We are so proud of the growth each of the six organizations has made over the year. And we made strides in securing the permits required to start construction on the Ivy VINE smart conference center, with hopes of starting construction in 2024.

Charities also served as the fiduciary agent for the Remote Area Medical Clinic, (RAM), sponsored by three local chapters of The Links, Incorporated. Over one weekend, RAM, a major nonprofit traveling provider of free quality healthcare services partnered with local medical providers and supported over 400 registered residents with free dental, vision, mammograms, and vaccination services valued at over \$170,000.

And, with your new and/or ongoing support of Charities, we continued our partnership with the Alpha Kappa Alpha Sorority, Incorporated, Iota Gamma Omega Chapter to fund and collaborate on a host of community projects which support our elderly, youth and families across the county. With a focus on scholarship, we collectively capitalized an ICC/IGO Endowed Scholarship at Bowie State University, one year ahead of schedule. And we awarded over \$70,000 in scholarships to students in Prince George's County!

As you read this Annual Report, I hope you will feel as proud as we do of the support and services we continued to provide the residents of Prince George's County. We are sincerely grateful for and tremendously appreciative of all our community supporters as we remember that "Only by giving are you able to receive more than you already have." Jim Robin

Sincerely,

Cheryl W. Owens, President



The Ivy Community Charities of Prince George's County, Inc.
6118 Walton Avenue
Suitland, MD 20746
301-702-7312

"I just try to help people ... I like to see them smile." Wallace "Pops" Broadnax. August 1925-February 2024

This has indeed been an extraordinary year for The Ivy Community Charities of Prince George's County, Inc. (Charities), and for me as I close this chapter as the organization's Executive Director! As I reflect over the past 15 years since taking office following the term of my mentor, Mrs. Erma W. Barron, I am filled with a sense of joy, exuberance and satisfaction that we were able to complete many of the goals that I set out for the organization over the years.

Charities grew from two 100% volunteer staff persons when I took office in 2008 to now eight staff who are not only dedicated and committed to the mission and purpose of the organization but also contributed immensely to its drive and success although their compensation does not yet meet the industry standard. New ideas, innovations and approaches were implemented because the staff was not afraid to dream big to achieve and sustain our premiere status in Prince George's County. Thank you, ladies!

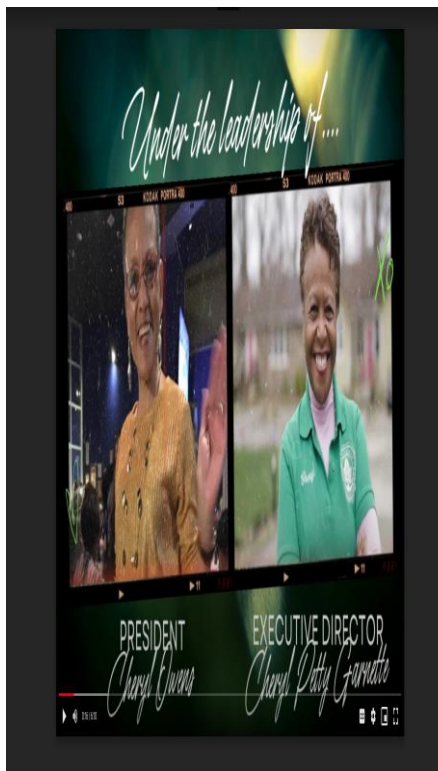
Over the past 15 years, Charities amassed more than \$3 million in grant funds at the State and local levels including foundation and corporation funding which in a few cases were unsolicited. Despite skeptics early on in our capital campaign, Charities was able to secure two parcels of property without a mortgage or loans, fully renovating and equipping the main building known as the Ivy Youth and Family Center because of the faith of our membership and the confidence of State and local government officials too numerous to name in this letter. When we opened our doors, other organizations that needed a space to hold their community service activities entered as well.

Despite the global pandemic, our service to the community never wavered. In 2023 our partnership with the Alpha Kappa Alpha Sorority, Inc., Iota Gamma Omega Chapter was energized with "joy" as we set records in service hours contributed by our scholars and our members, scholarship endowments established, and data collected to ensure that we were "achieving intentional results (AIR)." One year early, in 2023, we celebrated the establishment of the Ivy Community Charities/Iota Gamma Omega Endowment Fund at Bowie State University which was capitalized at \$25,000 and continues to grow.

Earning Maryland Nonprofits' prestigious Standards for Excellence Accreditation was no small feat that we accomplished in the fall of 2022 and celebrated at our Annual Meeting in 2023. Recognizing that our accomplishments in earning accreditation meant nothing if we did not "pay it forward" and use our experience and resources to help other small nonprofits, in 2023, the vision for the Ivy Village Incubator for Nonprofit Excellence (Ivy VINE) became a reality as we launched the training, coaching and networking elements of the program with six amazing nonprofit partners and three talented coaches.

Each year the members of the Board of Directors grew increasingly engaged in the work of Charities and the support of the staff. I am grateful for the leadership and friendship of President Cheryl W. Owens over the past four years who worked tirelessly with me along the journey. I also appreciate and am proud of Miriam W. McKinney who accepted and adeptly carries the torch as Executive Director to ensure that Charities remains a beacon of light throughout the Washington, DC metropolitan area.

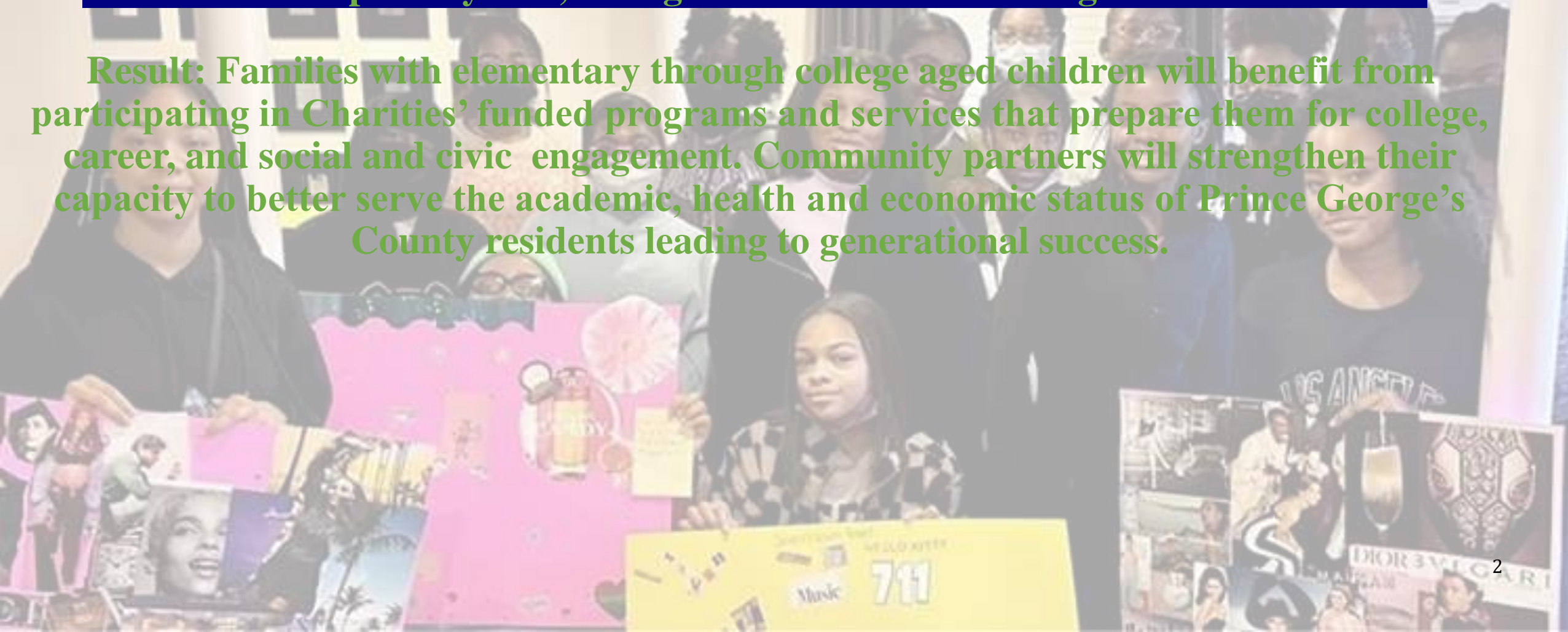
In conclusion, a special thank you to my husband Dr. John E. Garnette, my daughter Serenity Amber Garnette, my mother Alease Brooks and my beloved Pops for always believing in what I said I could accomplish with God's blessing.



The vision of The Ivy Community Charities of Prince George's County, Inc., is to be a premier provider of programs and services designed to empower youth and strengthen families by providing comprehensive programming, leading to a sustainable quality of life for families residing in Prince George's County, Maryland.

Mission: To empower youth, strengthen families and build generational success.

Result: Families with elementary through college aged children will benefit from participating in Charities' funded programs and services that prepare them for college, career, and social and civic engagement. Community partners will strengthen their capacity to better serve the academic, health and economic status of Prince George's County residents leading to generational success.



Our Strategic Path to Achieving Generational Success

Charities is committed to turning around the generational curse that often plagues Black youth and families and to focus on generational success. By empowering youth to define their future aspirations and equipping families with the tools and resources to strengthen their economic status, Charities will rewrite the narrative and launch a positive stance for the residents of Prince George's County, Maryland.

Our **focus** of generational success is intended to change the trajectory and progress beyond past histories of social injustice and inequity to a path that leads to improving, sustaining and advancing the quality of life for our community. Our **strategy** includes tutoring for elementary students; leadership development, team building and STEAM enrichment for middle school girls; college and career preparation for high school students; workshops for parents to help them advocate on their children's behalf; and wrap-around services for emerging nonprofits. Our **commitment** is to coalesce community partnerships, resources and talent leading to improved health, academics and economic stability of youth and families and increased longevity of small businesses throughout Prince George's County, Maryland.

Our path to generational success* requires:

Employees who are visionary, innovative, goal-setting, and passionate about succeeding

Board members who as leaders in the community are influencers, forward-thinking, knowledgeable and committed to giving to the organization

Programs that provide evidence of changing the quality of life for our residents

Financial strategies that substantially increase our assets over time and expand donor support

Marketing strategies that increase community awareness, brand recognition and stakeholder engagement

Facilities and operations that model the latest in technological advances

Charities Staff: Stellar Servant Leaders



Cheryl Petty Garnette

As Executive Director, Cheryl oversees the operations of the organization and in 2023, launched the Ivy Village Incubator for Nonprofit Excellence (Ivy VINE) to help strengthen the stability of the nonprofit sector in Prince George's County. Cheryl was named the 2023 Nonprofit Leader of the Year by the Greater Washington Community Foundation.



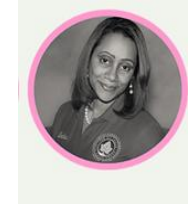
Miriam W. McKinney

In her role as Deputy Executive Director, Miriam manages the grants and fiscal operations of the organization. As a result of her efforts, Charities received a clean audit in 2023. In addition, Miriam tracked the revenue and expenses associated with nearly \$1,000,000 in grants received from State, foundation and local sources.



Brandee Reed

Brandee serves as Charities' Marketing and Communications Coordinator. In 2023, Brandee implemented a successful marketing strategy that included participant focus groups that helped to reframe and restructure our marketing and outreach efforts which resulted in a significant increase in the viewership of Charities' website and social media channels. The monthly e-newsletter produced by Brandee introduced the public to key stakeholders, highlighted program activities, and reported on successful fundraising initiatives.



Andrea Williamson

As Program Analyst, Andrea is responsible for collecting and analyzing program information to help Charities elevate its service to the community. In 2023, Andrea oversaw the contract awarded to a professional evaluation specialist that provided guidance and best practices to evaluate Charities' programs and implemented the contractor's guidance to improve attendance and form new processes for evaluating Charities' signature programs.



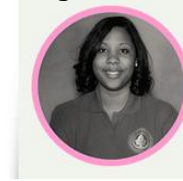
Rosa Page

Charities' Facilities Manager is Rosa Page. She oversees the two buildings owned by Charities including the Ivy Youth and Family Center where the program activities are held and the adjacent facility that will be constructed as the Ivy Village Incubator for Nonprofit Excellence (Ivy VINE) Office Suites. In addition to overseeing the maintenance of the buildings, Rosa also manages requests for rental use of the Ivy Youth and Family Center.



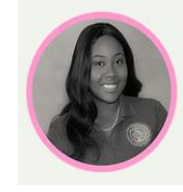
Michelle Boone

Michelle joined the Charities staffing team in 2023 as Special Assistant to the Executive Director. Building on her financial background, Michelle was instrumental in managing the financial efforts associated with the Remote Access Medical (RAM) project that provided medical, dental, and vision care to more than 400 residents over the Veterans Day weekend in November 2023 valued at approximately \$170,000.



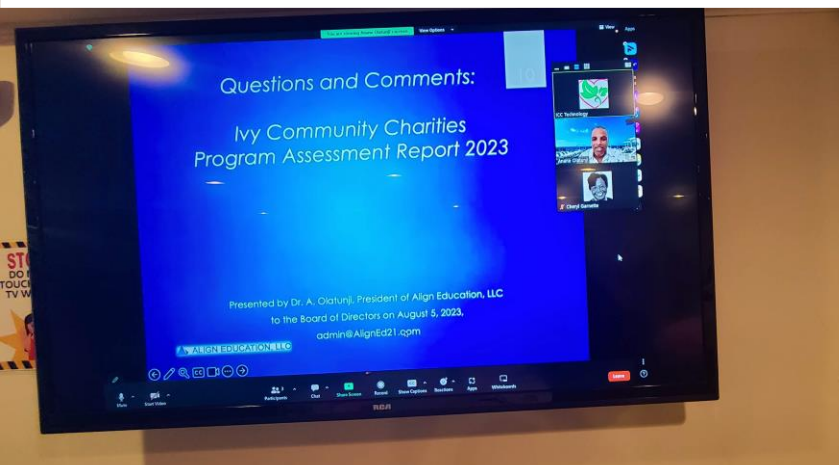
LaTisha Booth

LaTisha is one of two Technology Coordinators providing service to Charities' members, volunteers, staff and Board of Directors to ensure that appropriate hardware and software is operational at the Ivy Youth and Family Center. In 2023, LaTisha's most significant contribution was identifying, building and testing a new online system to support our scholarship program in concert with our strategic plan to implement technology applications to help us better serve the public.



Shane' Lee

Shane' is a Technology Coordinator providing technology assistance to Charities' members, volunteers, staff and Board of Directors. In 2023, Shane' led the redesign of Charities' website and applied her graphic talents to creating or contributing to the design of more than 50 flyers to support Charities' programs and fundraising activities as well as being on site to ensure that appropriate hardware and software was operational as needed by individuals using the Ivy Youth and Family Center.



Soaring in Board Engagement

Charities' 25-member Board of Directors includes educators, federal employees, entrepreneurs, accountants, religious leaders and retired citizens. At least 80% of the Board members attended regularly scheduled meetings and using the "give or get" policy instituted in 2023, all Board members made a financial contribution to the organization of at least \$300 annually.

During the 2023 Board retreat, four Executive Directors from other local nonprofits shared their experiences and best practices related to program implementation and Board engagement. Charities' Ready for Work Capacity Building Coach Erica Roberts led a workshop on understanding governance and management roles for nonprofits and Dr. Anane Olanuji, evaluation contractor, shared the results of his review of Charities' programs and recommendations for conducting an effective program evaluation. Charities successfully graduated from Fair Chance's Ready for Work Program in 2023.



Stories of Excellence to Empower Youth and Strengthen Families

- Charities conducted more than 20 workshops and provided access to economic mobility resources for middle, high school and college students as well as adults and seniors that increased their knowledge regarding financial literacy, student financial aid, FAFSA applications, banking, and investing options, respectively.
- With support from County Council grants, Charities provided more than \$70,000 in scholarships to Prince George's County high school seniors on the basis of merit and need which increased the opportunity for County students to attend college and resulted in a total of more than \$650,000 in scholarships awarded since 1994.
- Students and parents in the Adopted Families Program who participated in the third annual Summer Family Technology and Arts Camp increased their knowledge of computer animation, analytics and artistic creation through technology.
- In collaboration with the Alpha Kappa Alpha Sorority, Inc., Iota Gamma Omega Chapter, volunteers provided healthy snack packs to 248 students at Princeton Elementary School in Suitland, Maryland. The Childhood Hunger Initiative Power Pack (C.H.I.P.P.) program is a national initiative of the Sorority. A total of 4,314 snacks were distributed between March and December 2023 to ensure that children were not hungry over the weekend.
- In response to the County Executive's call to action to address homelessness, Charities provided more than 100 pounds of nonperishable items to the Capital Food Bank, \$500 worth of educational and recreational toys to rebuild and replace the media playroom at a local domestic violence shelter, and 537 household items and furnishings to sustain families moving from the shelter to permanent residences.
- Since its inception, Charities has worked with local school officials to identify children in need of new shoes. A special grant provided by the JCPenney Department Store afforded Charities the funding to provide more than 100 pairs of shoes for children and families across Prince George's County, Maryland.
- With grant funds provided by Maryland House of Delegates Member Karen R. Toles, the Good Intentions Foundation and NAI Michael Organization, Charities hosted a recycling and shredding day for the community that produced 10,000 pounds of shredded paper and recycled items to help preserve the environment.



The Sarah Wise Wooten Young Ladies Academy affectionately known as SWWYLA (pronounced “swy-lah”) prepares middle school girls with leadership, team building and STEAM (science, technology, engineering, arts and mathematics) experiences. Each session began with the girls making an affirmation as Dream Makers that defined their ambition to develop new talents and skills to help them to excel in academics and service within the community.





In 2023 SWWYLA "Dream Makers" participated in a special program in partnership with the City of Bowie to determine the age of several of the trees at the Allen Pond Park. After measuring the trees, the girls submitted their information into the US Department of Agriculture database. Haley Gloster, one of our 2023 SWWYLA members, was selected to share her experiences as a SWWYLA participant in the Fair Chance Ready for Work end-of-the-year video celebrating Charities' accomplishments.



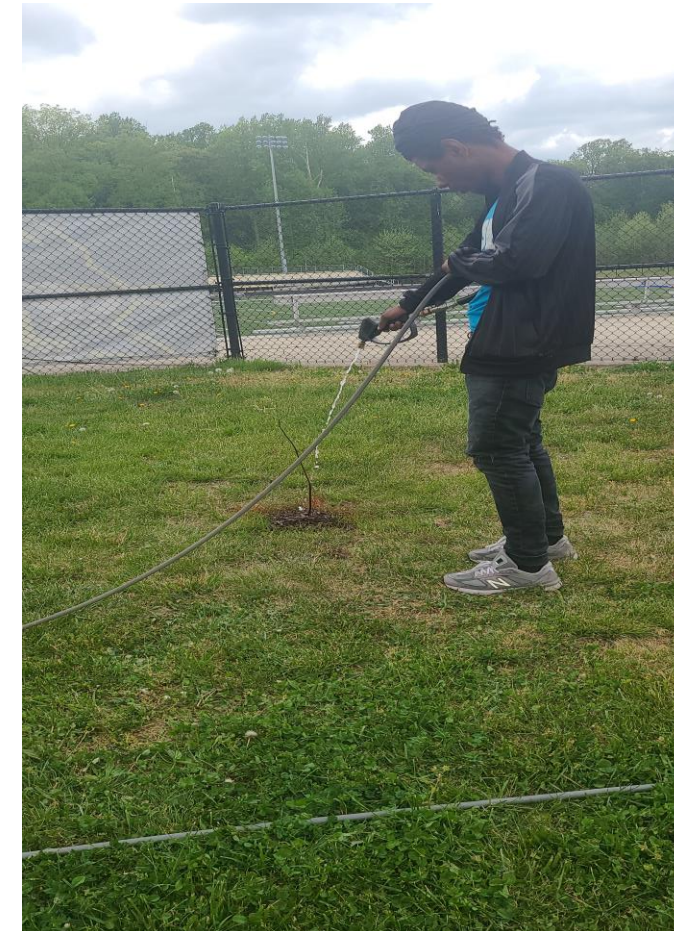


Youth Leadership Initiative, YLI, is a youth-led and highly interactive leadership development program designed to empower and engage youth ages 11-13 with community service activities.

YLI Ambassadors request your support by donating children's books and summer toys that are in good condition. Items should be placed in the designated boxes outside of Room 113 by Tues., June 13th

Youth Leadership Institute (YLI)

In partnership with the Alpha Kappa Alpha Sorority, Inc., Iota Gamma Omega Chapter, Charities sponsored the Youth Leadership Institute (YLI), a youth-led leadership development program conducted by chapters across the country to empower and engage middle school youth through educational workshops and field trips related to STEAM, the environment, culture and careers.



Empowering Youth: Preserving Our Environment YLI Arbor Day 2023



The Institute for the Growth and Development of All America's Youth (Institute GADAAAY)



The Institute for the Growth and Development of All America's Youth is designed to prepare both female and male high school students for college and careers. Examples of workshops during 2023 included a discussion on collectivism in the African American community; designing canvas bags and mugs with affirmations; exploring the Scooby Do Mystery Room to equip students with critical thinking skills in preparation for state testing; building bears and donating them to Children's National Hospital; and learning with senior citizens how to design floral arrangements.





Parents on Track was established in 2000 by then Charities President Cheryl Petty Garnette in response to a national call to action to support disadvantaged youth who were not succeeding in traditional classrooms. Charities' response was a targeted focus on parents to help them find and use the requisite skills and resources to effectively advocate for their children on matters related to academics, health, financial literacy and social adjustment.

Strengthening Families and Optimizing the Legacy: Dr. Martin Luther King, Jr. Day of Service

Each year Charities partners with the Alpha Kappa Alpha Sorority, Inc., Iota Gamma Omega Chapter to commemorate the life of Dr. Martin Luther King, Jr. with a special service project. In 2023, the organizations collected and distributed more than 1000 toiletries, diapers, socks, hats, and personal protective equipment (PPE) to a local shelter for women, Title 1 schools and the Bowie State University Food Pantry.





Remote Area Medical (RAM) Clinic held for the first time in Prince George's County, Maryland!

For more than 38 years, Remote Area Medical (RAM) has provided free healthcare services to those in need through the operation of pop-up clinics around the country.

Per the Prince George's County Health Department Community Needs Assessment of 2022, Prince George's County residents rank highest in the State of Maryland in negative healthcare outcomes, mental health issues, sexually transmitted diseases, alcohol abuse and other medical issues, particularly from pre-teens to adults, with a staggering 70% of County residents identified as overweight or obese. Furthermore, according to the Maryland Vital Statistics Annual Report of 2022, more than 60% of deaths in Prince George's County, Maryland, are the result of diseases, with cardiovascular disease as the leading cause of deaths. Many residents lack health insurance and struggle to find affordable health care. The prevalence of diabetes, hypertension and HIV in the county, particularly among the elderly and foreign-born residents, are also areas of concern. As no surprise, the COVID-19 pandemic exacerbated many of these challenges.

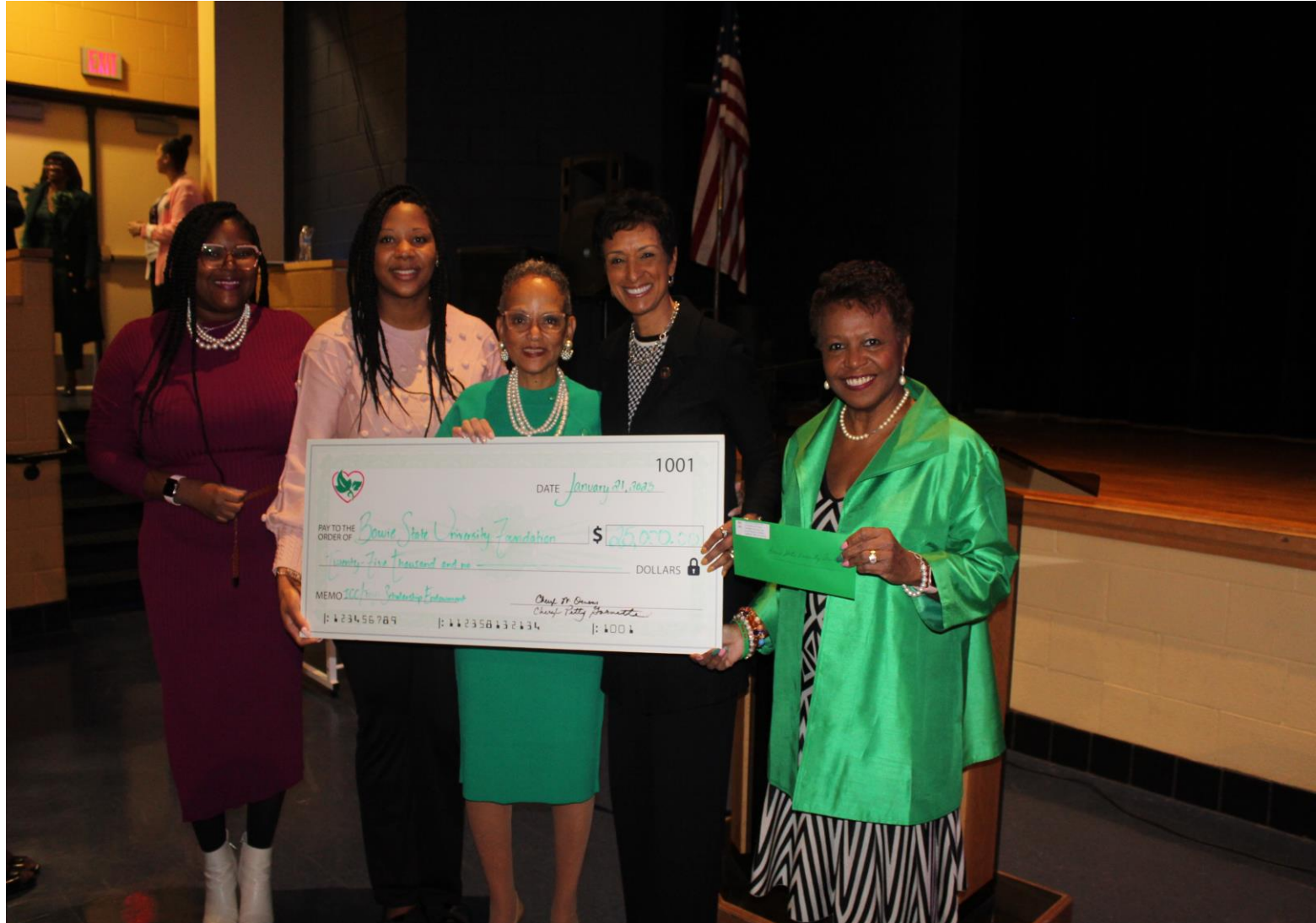
In response to an overwhelming need for services and collaborative synergy, Ivy Community Charities partnered with the three chapters of The Links, Incorporated, in Prince George's County to co-host the Remote Area Medical Clinic – Largo at Prince George's Community College. The RAM Clinic was the first of its kind held in Prince George's County, Maryland. Charities served as the fiscal agent for the event that served 418 residents over the 2023 Veteran's Day weekend. At no charge nor requirement of insurance or proof of citizenship, residents were afforded the services of dentists, physicians, eye specialists and other medical personnel valued at approximately \$196 per patient.

Patients received eye exams and 145 pairs of eyeglasses; dentists performed 205 tooth extractions, 118 fillings, and 44 cleanings; physicians performed medical examinations for 146 individuals and conducted 56 breast health services. Patients were provided flu vaccines and testing for HIV, cholesterol and diabetes. A total of 1,748 patient services were provided that included mental health TED talks, tips, guidance and resources. The total of 900 volunteers set a RAM record for the three-day weekend!





Supporting Academic Excellence at Bowie State University, Maryland's First Historically Black College and University



After receiving donations at the end of 2019 from Charities' members Chris Stewart and Lisa White to establish the Ivy Community Charities/Iota Gamma Omega Bowie State University Endowment Fund, Charities signed a Memorandum of Understanding in 2020 with the University with a commitment to raise \$5,000 each year from 2020-2024 when the funds would be transferred to the Bowie State University Foundation and be capitalized at \$25,000. Charities was able to exceed its five-year goal and presented a check for \$25,000 to Dr. Amita Breaux at the January 2023 Annual Meeting – one year ahead of schedule! Bowie State University is located in Prince George's County, MD.

Sustaining Excellence: Charities' Scholarship Endowment Funds Exceed \$240,000!

Prince George's County
District 4 Scholarship
Fund – established by
the Honorable Ingrid M.
Turner



Prince George's County
District 7 Scholarship Fund –
established by The Honorable
Karen R. Toles



Magalene Bowling
Memorial Scholarship
Fund – established by
Joyce Bowling-Heyward



June C. Turner
Educational
Scholarship Fund –
established by the
family of June C. Turner



Virginia State University
Scholarship Fund – established
by Saran T. Baker



Gender Equity and
Empowerment
Scholarship Fund -
established by Wendy
Morton-Huddleston



Mary Ray Thompson
Scholarship Fund –
established by the
Charities Board of
Directors from the
Mary Ray Thompson
Trust Fund



Fannie and Cynthia Williams
Scholarship Fund – established
by Cynthia Williams



Wendell Moore
Memorial Scholarship
Fund – established by
LaJuan Moore



Ivy Community
Charities Scholarship
Fund - established by
Erma W. Barron



Lisa White Scholarship
Endowment Fund –
established by Lisa White



Garnette Family
Scholarship Fund –
established by Cheryl
and Serenity Garnette
and Wallace Broadnax



Ivy VINE Goals Set for 2021-2023

Charities identified six major goals for the Ivy VINE during 2021-2023 that were achieved one year early as recorded in the 2022 Annual Report. Through innovative fundraising, Charities raised more than \$170,000 to support the Ivy VINE initiative over two years. Thanks to the sponsorship of State Senator Anthony Muse, Charities received a State of Maryland bond bill in 2023 to support the construction of the Ivy VINE Training Center/Podcast Studio and Ivy VINE Office Suites adjacent to the Ivy Youth and Family Center. The 2023 bond bill coupled with the 2022 bond bills under the leadership of Senator Ron Watson, Delegate Wanika Fisher and Delegate Karen R. Toles increased the total construction budget to more than \$650,000. With a grant awarded by the Office of the County Executive Angela D. Alsobrooks in 2022 and 2023, training and coaching of competitively selected nonprofits was able to commence in 2023.

Forging the Path to Nonprofit Excellence for Generational Success (sharing our story of excellence so others can soar!)

The Ivy Village Incubator for Nonprofit Excellence (Ivy VINE)

Our vision from the day that we purchased the property at 6118 Walton Avenue was to give back to the community by establishing a facility where emerging nonprofits would have office space, access to business resources, and training to help build their capacity to serve our youth and families. The Ivy VINE complex is designed to strengthen the economic power of nonprofits in Prince George's County, particularly Black businesses, serving at the crossroads of innovation and destination – where emerging nonprofit leaders can create new ideas and synergistic business partnerships to address County needs.

Not deterred by the delay in the construction efforts, in January 2023 Charities interviewed and selected the first cohort of nonprofits to participate in the two-year program of workshops, coaching activities and access to resources that are intended to encourage the participating nonprofits to achieve Maryland Nonprofits Standards for Excellence Basics Level Recognition. The nonprofit partners completed more than 40 hours of training focused on leadership and board development, nonprofit management, financial management, strategic planning, and grant writing as well as nearly 50 hours of coaching. They also were awarded mini-grants ranging from \$1000 to \$2500 to support their operational and programming initiatives.



Ivy VINE Nonprofit Partners



- Dr. Tabia Pope, Executive Director, Head to Speech, Inc.
- Shoaregard Philkpott, Executive Director, It Takes a Village Collaborative, Inc.
- Dane Smith, Executive Director, Next Generation Youth Programs, Inc.
- V'Nell Costa, Executive Director, Southern Prince George's County Community Charities, Inc.
- Dr. Demi Fauziyyah, Executive Director, The Aafiyah Project, Inc.
- Alesha Wilson, Executive Director, The Right Fit, Inc.

And Coaches!

- Dr. Marlinda Boxley
- L. Kaye Darr, Esq., ACS Associates
- Erica Roberts, X is Possible

Ivy Community Charities Community Advisory Committee



Tiffany Turner Allen



Valerie Ashley



Robert Kee



Glenn Mahone



Ashanti Martinez



Jeff McFarland



Andrew Roud



Howard Stone



Shelley Wade



Alesha Wilson

Sustaining Excellence: Charities' Financial Highlights

2023 Financial Snapshot

Income Summary

Membership dues and general operations contributions	\$	60,755.00
Fundraising events	\$	82,521.29
Grants	\$	257,930.70
Donations	\$	131,499.84
Other Income	\$	120,059.26
Total Income	\$	652,766.09

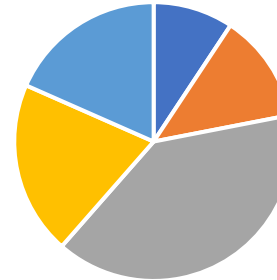
Expense Summary

Administrative	\$	88,577.27
Fundraising	\$	2,143.65
Ivy League	\$	25,743.55
College Readiness and Scholarships	\$	124,467.05
Generational Family Success	\$	109,258.17
Ivy VINE Cohort One	\$	69,233.84
Marketing	\$	11,099.47
Technology	\$	8,706.14
Other Expenses	\$	57,695.14
Total Expenses	\$	496,924.28

Balance Sheet Summary (as of December 31, 2023)

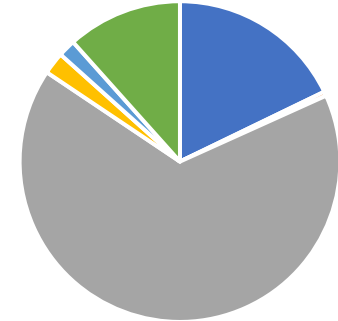
Total Assets	\$2,571,366.95
(includes cash of \$711,282.19)	
Total Liabilities	\$16,690.53
Total Equity	<u>\$2,554,676.42</u>
Total Equity and Liabilities	<u><u>\$2,571,366.95</u></u>

2023 Revenue



- Membership dues and general operations contributions (9%)
- Fundraising events (13%)
- Grants (40%)
- Donations (20%)
- Other Income (18%)

2023 Expenses



- Administrative (18%)
- Fundraising (0.00%)
- Programs and Services (66%)
- Marketing (2%)
- Technology (2%)
- Other Expenses (12%)



Charities continued its long-standing fundraising activities to support programs, community outreach and capital campaign initiatives including:

- Do More 24 in collaboration with the United Way of the National Capital Area
- Give 8/28 in collaboration with the Young, Black and Giving Back (YBGB) Institute held on the historic date of August 28 during Black Philanthropy Month
- 29th Annual 5K Walk, Run, Ride for the Health of It
- Giving Tuesday World Day of Giving

These fundraising efforts were led in 2023 by Board Member Jacqui Glast, Chair of the Ways and Means Committee, and Co-Chair Jocelyn Price.

Additional revenue generating streams are presented on the next pages that exemplify the strategic and innovative approaches that were employed to further sustain the economic growth of the organization.

The Jewel Group Concept: A Fundraising Success Story! (2021-2023)



Rosalind
Daniel-Walker



Francena
Jackson



Rosina
Simmons



Robyn
Braswell



Wanda
Green



Monica
Lane



Shirley
Stewart-Tibbs



Kim
Boddie



Phyllis
Randle



Yolanda
Anderson



DeBorah
Grant



Delnorah
Grant



Tracy
Banks



Winnie
Shabazz



Tomeka
Bumbry



Delia
Johnson



Toni
Perry



Denise
McKenney



Raneene
James



Sheree
Carson



Ginneh
Stowe



Carol
Holland



Wanda
Smith



Kendra
Day-Hernandez



LaJuan
Moore



Rhonda
Summey-Hester



Varnell
Washington



Lisa
Wills



Marsha
Matthis



Tracy
Miller



Jacqueline
Glast



Tanesha
Gibson



Lisa
Hawkins



Sonya
Armfield



Cheryl Petty
Garnette



Belinda
Wiley,
Chair

The Jewel Group fundraising concept was conceived by Board Member/ Building and Property Committee Chair Rosalind Daniel Walker in 2011. Twenty years later, Charities employed the concept again as a three-year strategy to help fund the construction of the Ivy Village Incubator for Nonprofit Excellence or Ivy VINE. We divided our members into strategic teams known as Jewel Groups. The teams, which began in 2021, carried out approximately 40 creative and novel fundraising activities over three years - some held virtually as we began during the global pandemic – with the last of the activities ending in 2023. Charities raised more than \$185,000 over three years with the top group led by Shirley Stewart-Tibbs and Kim Boddie raising more than \$30,000!

The Jewel Group Concept: A Fundraising Success Story! (2021-2023)



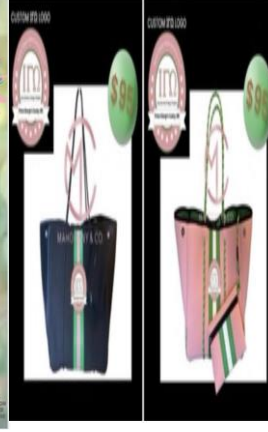
- The String Queens Virtual Concert
- Gumbo Done Right Cooking Session
- Double Good Popcorn
- Baby Ivy Contest
- Paws for a Cause Contest
- Katydid and More Sales
- Sitting Pretty AKA Lawn Chairs



- The Biggest Loser
- Picture Perfect Sorors
- Family Celebration Portraits
- African American Cards and Gifts
- Perfect Paint and Sip
- Paint and Pamper Day Party
- Rita's Gift Cards
- HBCU Bowling Party
- ICC Scarf Sale



Sold out - twice!



- Shoe and Purse Sales
- Exercise for a Cause
- Little Mister and Miss ICC Contest
- Comedy Jam Session
- Christmas Concert
- Holiday Decorating Contest
- Michael Jackson on Broadway
- Ivy Emporium & Bazaar



Levy Restaurants

W

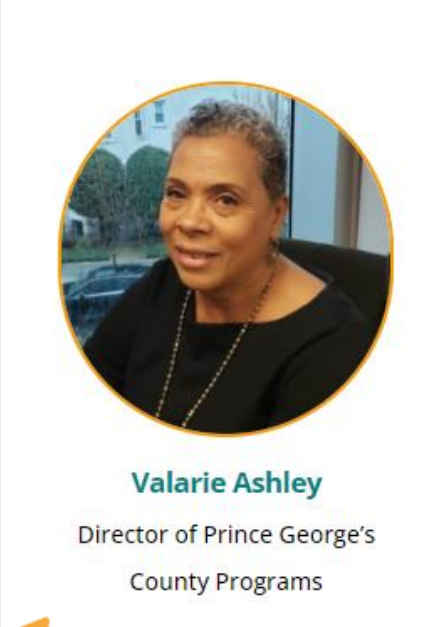
Charities was invited to participate in the FedEx Stadium community initiative in partnership with Levy Restaurants and the Washington Football team during the 2022-2023 and 2023-2024 seasons. Over the two years working at various concession stands during football and concert events, with special thanks to approximately 30 members and friends, Charities raised nearly \$10,000!!! Many thanks to Sayauni Bethea from Levy Restaurants and Dr. Pamela Epperson, Charities' Liaison, for their tremendous efforts to help us exceed our financial goals.



Community Business Partners & Funders



Heather Iliff
President & CEO



Valarie Ashley
Director of Prince George's
County Programs



Darcelle Wilson



Carol Holland



Candice Austin



India Paige



Iota
Gamma
Omega
Chapter



The Ivy Youth and Family Center and Ivy VINE Capital Campaign Donors: 1999-2022

Emerald Donor Level (\$25,000+)

Alpha Kappa Alpha Sorority, Inc., Iota Gamma Omega Chapter

Mary Ray Thompson

Diamond Donor Level (\$10,000.00 - \$24,999.99)

Cleo Belmonte

Inez T Henderson

Gloria Lawlah-Walker

Carrie Moore

The Compass Group

Cheryl Petty Garnette

Shirley Jackson

Beatrice M Marshall

Cynthia Speight

Crystal Donor Level (\$7,500.00 - \$9,999.99)

Rosalind Daniel-Walker

Tanya Penny-Woods

Lisa White

Pearl Donor Level (\$5,500.00 - \$7,499.99)

Magalene L Bowling

Zelmar Gordon

Margie A. Singleton

Volkswagen Group of America

Coalition Properties Group

Wendy Morton-Huddleston

June C. Turner

Gold Donor Level (\$2,500.00 - \$4,999.99)

Sharon Allen

Elizabeth Broadway

Kim Cox

Carol June Holland

Dorine Miller

Frances Plummer

Mary Ann White

Saran Baker

Louise Brown

Jenmaire Dewberry

Janice Kee

Margaret Dukes Neale

Elsie Shaw-Harrod

Delceta Wiley

Erma Barron

Sharon Collins

Tanesha Gibson

Eula Keen-Woods

Juanita Orr

W. Chris Stewart

Andrea Williamson

Sandra Benston

Compass Group

Jacqueline Glast

Jane McCray

Cheryl Owens

Ingrid Turner

Demetrius Windom

Nyrtha Braxton

Conifer LLC

Felecia Greer

Denise McKenney

Carolyn N. Pinckney

Kathy Waymmann

Silver Donor Level (\$1000.00 - \$2499.99)

Alpha Phi Alpha Brothers

Mary Benson

A. Lynn Bolles

Marie Bracely

Grace Clark

Jeanette Davis

Avis M. Favors

Ethel Anderson

Khili Benston-Austin

Sandra Boswell

Shirley Stovall Briggs

Anita Clarke

Theatrice Davis

Joyce Felder

Sharon Barry

Bronda Blake-Newman

Audrey Bourke

Tomeka Bumbry

Cynthia Clarke

Valerie Durant

Maria Floyd

Nona Battle

Sandra Boatman

Donna Bowe

Brenda Cadette

Neldra Colwell

Pamela Epperson

Katoshia Ford/Ford Management Svc.

Brenda Beattie

Kim Boddie

Velma Bowser

Lillian Carter

D. Kim Singleton & Assoc.

Conni Evans

Serenity A. Garnette

Silver Donor Level (\$1000.00 - \$2499.99) continued

Greta Garrett	Anna Hodges	Garlette Jordan	Sandra McDonald	Yvonne Owens	Preit Assoc. LP, PG Plaza	Margretta Tinsley
Lossie Gibson	Nycole Hollington	Wanda Sabreenah Key	Nicole McLaurin	Rosa Page	Betty Randel Robinson	Verizon Foundation
Sarah Gilliam	Yvonne Hood	Gloria Lawlah	Clarise McLeod	Pegasus Promotional Products	Kenra Shaw	Agnes Diane Williams
Cheryl Hall	Elizabeth Howard	Almeda Lee	Juanita Miller	Lisha Penn	Peggy Smith	Carolyn Williams
Dora Halton	IGO 68 D.I.V.A.S. Spring 1999	Beatrice Leonard	LaJuan Moore	Toni Perry	Elizabeth Smith-Buckmon	Diane Williams
Alberta Hamilton	IGO P.E.A.R.L.S Spring 2011	Sylvia Liggins	Lottie Morgan	Virgie Phifer	Kathy Summers	Rita Womack
Ingrid Harrison	IGO Sweet 116 Fall 2021	Lucy Lucas	Shadonne Moses	Carolyn Piper	Edith Taylor	Jacqueline Woody
Lisa Hawkins	Charline Jacob	Priscilla Mann	Mount Rose MD Links	Cynthia Poteat	Felice Taylor	Latrise Workman
Donna Herring	Delia Johnson	Sidonie McCoy	Cheryl Muller-Fils	Dorothy Prather	Marselle Taylor	Edith Wright

Bronze Donor Level (\$500.00 - \$999.99)

Linda White Andrews	Capitol Cars & Concierge	Ethel's Girls	Jean Humphrey	Millennium Mortgage Bankers, LLC	Delores Richardson	Deborah W Stokes
Angela Anglin	Carrie Concessions Inc.	Family Strengthening Committee	ICC Building and Property Committee	Terri Miller	Rips Country Village	Maggie Taylor
Dorothy Bailey	Debra Carter	Audrey Farley	IGO 53 Dreams	Joyce Minor	Brenda Rivers	Stephanie Taylor
Deborah Ballard-Rious	Hazel Carter	Lyvonnia Fontaine	IGO Akaclaimed54	Marguerite Morman-Matthews	Rachel Robinson	Brenda Terry-Leonard
Marjorie Banks	Fredricka Hawkins Charity	Juliet Francis	IGO Line of 1983	Mae Myers	Maryann Royall	Sharon Theodore-Lewis
Tracy S. Banks	Ralph Chittams	Lesli Friend	IGO Precious Pearls	Jeanee Newman-Williams	Christina Royster	Stacy Walker Turner
Lorraine Bell	Joyce Clark	Julia Gay	Arleen Jeter	Dale O'Neal	Helena Royster	Dana Tutt
Jacquelyn Benton	Danita Claytor-Jones	LaTonja Gentry	Jayne Johns	Ops Boss Coaching	Melanie Shaw-Geter	Gail Tyler
Mandisa Berry	Marlena Colleton-Pearsall	Karen Gooden	Diane Johnson	James Owens	Amelia C. Simmons	Daria Valentine
Deatrice Besong	Sandara Collins	Shirley Gravely-Curry	Robert Kee	Ralph Page	Charlotte Simpsom-Hawkins	Mary Lee Walker
Michelle Boone	Sandra E. Collins	Michael Green	Shannon Keys	Shawnita Pair	Danielle Singleton	Delores Washington
Dawn Bracely	Michelle Collins-Wesley	Joan Hall	Kristen Kirkland	Debra Palmer-Henry	Corine Smith	Ann Wheeler
Tammi Brantley	Shauna Cooke	Shane' Hargraves	Geraldine Kiser	Parts of Me Clinical Behavioral Serv.	Ryan Smith	Cleopatra White of Lifestyles in Black
Robyn Braswell	Sallie Cooper	Rochelle Burnette Harley	LaShawn Knowles	Barbara Patterson	Cindy Soper	Belinda Wiley
William Braswell	Tia Cooper	Ronalle Hawkins	Leatrice Lee	Sondra Petty	Yvonne Sprague	Almenia Williams
Rita Brown	Kellie Cosby	Gay Mercer Hayslett	Shane' Hargraves Lee	Gwendolyn Phillips	Stephanie Sprow	Brittanny Williams
Cruzita Bryant	Kenny Dantzler	Carlita Head	Theresa Brockenberry Lee	Popcorn Club Committee	Shining Stars	Deborah Williams
Zetta Burnette	Donna Davis	Carol Herring-Reid	Dorrence Levy	Takeisha Presson	Rhonda Stenson	Cynthia Williams-Jones
Johnny Butler Jr.	Frank Davis	Theoriosis Hickman	Cookie Matthews	Deborah Price	Joan Stevens	Karyn Smith Wills
Gabrielle Caddle	G.Lynn Saffold Davis	Kristi Holden	Miriam McKinney	Tuawana Braxton Pridgen	Jeanette Steward	Rosalind Wilson
Sarah Caldwell	Kendra Day-Hernandez	Dorothy Holland	Shawn McLeod	Razoo Foundation	Shirley Stewart-Tibbs	Imogene Woodley
Marva Jo Camp	Delores Epps	Rae Hubbard	Maisha Fleming Miles	Aija Rhodes		

Men of the Ivy Gold Level (\$2500+)

Dr. Limone Collins (Sharon)

Ronald Henderson (Inez)

Men of the Ivy Silver Level (\$1000 - \$2499)

Ryan Butler

Dr. John E. Garnette (Cheryl)

John Gordon (Zelmar)

Allen Jackson (Shirley)

John Simms (Oretha)

Lt. Col. (Ret) Louis Williams (Diane)

Men of the Ivy Bronze Level (\$500 - \$999)

William Braswell (Patricia)

Ralph Chittams (Patricia)

Kevin Cooke (Shauna)

Michael Green

James "Rafeeq" Owens (Cheryl)

Ralph Page (Rosa)

Attorney Obie Pinckney (Carolyn)

Joe Walker (Rosalind)

The Honorable Ron Watson, Ph.D. (Ingrid)

Rev. John Waymmann (Kathy)

Vernon Woods (Tanya)

Want to join the Men of the Ivy?

Scan here:



Alpha Donor Level (\$1.00 - \$499.99)

212 Degrees Realty LLC	Jennifer Allen	Yolanda Appiah-Rubi	Benard Baker	Keith Beacham	James Bethel	Louise Boone
321 Holdings LLC	Keisha Allen	James Aqueelha	Efrem Baker	Fonda Beander	Lendy Bethel	LaTisha Booth
A Lesson Learned	Kendra Allen	Jade Arceneaux	Linda Baker	Helen Bearden	Bianca Bevans	Ja-Na Bordes
ABCR8TIONS	Mercedes Allen	Elmore Joyce Archer	Sheneka Baker	Melissa Beck	Mary Beverly	Kimberly Bose
Jamie Abd-Shakur	Randy Allen	Sonya Nichelle Armfield	Anand Balasubramani	Lillian Kay Beckley	Claudia Bickham	LaShawn Boston-Knowles
Messellech Abebe	Sherian Allen	Sandra Armstrong	Marcus Baldwin	Liliane Bedford	Brian Birtell	Ingrid Bough
Deborah Abney-Nelson	Tara Allen	Saundra Armstrong	Mary P. Baldwin	Kara Bedoya	Jacques Black	Sarah Bouldin-Carr
Lilia Abron	AllenOne Travel	David Arnett	Autumn Ballard	Reginald Belcher	Black Women for Positive Change	Alana Boutelle
Sadiya Abubakri	Debra Allen-Williams	Sandra Arnold	Jeremiah Baltimore	Angela Bell	Kaira Blackmon	Carolyn Bowden
Judith Abunaw	Rita Alleyne	Tracy Arnold	Lacinda Bankins	Anthony Bell	Avanti Blackwell	Sierra Bowe
Joyce Adair	Sharon Allison-Ottey	Aleisha Arrington	Vanetta Banks	Gloria Bell	Antonia Blair	Estelle Bowers
Christina Adams	Kaaya Allotey	Art of Dentistry	Tonya Barbee	Judith Bell	Annette Blake	Cynthia Bowie
Feris Adams	Traci Allotey	Keara Artis	Vicki Barber	Linda Bell	Brett Blake	Kennedy Bowie
Lakiecia Addison	Ava Alston	Lyric Artis	Melanie Barker	Sade Bellamy	Karen Blake	Wiley Bowling
Adeola Adetayo	Berniece Garnette Alston	Ntybu Asanti	Hillary Barksdale	Bettye Bell-Daniew	Tomsene Blake	Joyce Bowling-Heyward
Jasmynn Adetunji	Karey Alston	Valarie Ashley	Kammikia Barnes	Alysha Belle	Bronda Blake Newman	Nicole Bowman
Bianca Adkins	Mary Alston	Abiola Ashorobi	Ronda Barnes	Ashley Belle	Shellie Blakeney	Trinell Bowman
Krystal Adkins	Always Look Fabulous	Katayat Ashorobi	Samantha Barnes	Linda Belle	Jocelyn Bland	Marlinda Boxley
Yvette Aidara	America's Charities	Lisa Ashton	Shelby Barnes	Marion Belser	Akia Blandon	Wanda Boyd
Jacqueline Akerblom	Barbara Anderson	Patricia Askew	Toni Barnes	Marsha Bembry	Demaries Blondonville	William Boykin
Lola Akingbade	Claren Anderson	Associations of Gov't Accountants	Willie Barnes	Benevity	Mary Bloomfield	Veronica Bradford
Marchelle Akins	John Anderson	Lenora Atakulu	Moultrie Barr	Brandon Benjamin	Donna Blue	Lisa Bradley
Crystal Alen	Mary Anderson	Bridgette Atkins	Terrance Barr	Debra Benjamin	Blue Sugar	MargarettaD. Bradley
Gia Alex	Montez Anderson	Ebony Atkinson	Charity Barrett	Mary Benjamin	Rhonda Boatright	Robin Bradley
Alisha Alexander	Natasha Anderson	Gerard Atkinson	Crystal Barrett	Latrese Bennett	Bobby McKeys, LLC	Sarah Bradley
Cotena Alexander	Phyllis Anderson	Megan Atkinson	Simone Barrett	Stephanie Bennett	Gale Bolts	Shakera Bradley
Keith Alexander	Ronald Anderson	Tawanda Atkinson	Stephanie Barry	Takoma Bennett	Niani Boler	Stephanie A. Bradley
Kelly Alexander	Roxanne Anderson	William Atkinson	Phyllis Barts	Vivian Bennett	Kiara Bond	Telisa Bradley
Kim Alexander	Tabitha Anderson	Beverlyann Austin	Angela Battle	Bennie Benson	Jo Bonney	Trasee Bradley
Monae Alexander	Tee Anderson	Frances Austin	April Battle	Kina Benson-Austin	Brandon Boodie	Stacy R Bradner
Monique Alexander	Rochelle Andrews	A Awkward	Felicia Battle	Monica Benton	Leza Boodie	Tina Bradshaw-Smith
Taylor Alexander	Ashley Anglin	B Reed Consulting	Sharon Battle	Rianna Berkely	Melford Boodie	Alicia Branch
All Shades of Pink, Inc.	Anjacor Marketing, Inc	B. Reese Enterprises, LLC	Yvonne Bauer	Arnissa Berry	Sheldon Boodie	Cheryl Branch
Andrea Allen	Jasmine Anthony	Denise Bailey	Angela Baylor	Karyn Berry	Felicity Booker	Joan Branch
Bettye Allen	Ap Life Enterprise	Rita Bailey	BB's Tasteful Affairs	Teyquana Berry	Barbara Booker-Wood	Nealy Brannon

Alpha Donor Level (\$1.00 - \$499.99)

Patricia Brantley	Dawn Johnson Brown	Gretchen Brumley	Janice Butts	Jane Carroll	Sandra Chapman	Glenda Clay	Raquel Colon
Ija Branton	Debra Brown	Melissa Brunson	Suzan Buyck	Roxann Carroll	Cynthia Chase	June Clayburn	Elizabeth Colston
Patricia A. Braswell	Ericka Brown	Helen Bryant	BWI Crashpad	Alicia Carson	JoVonna Chase	Darryl Clayton	Andreka Conner
Tamesha Brathwaite	Gayle Brown	Janet Bryant	Byoungsweets	Eric Carson	Kalif Chase	Lekisha Clayton	Erycka Constant
Kimberly Braxton	Hailey Brown	Lubrina Bryant	Janelle Byrd	Rita Carson	Peggy Chase	George Clements	Michelle Contee
Tia Breckenridge-Tyson	Jacqueliyn Brown	Tamla Bryant	Nevin Byrd	Sharee Carson	Christina Cheeks	Sharon Cliett	Jennifer Cook
Angelia Bremby-Cooper	Janet Brown	Chiquita Buchanon-Smith	Patricia Byrd	Sheree Carson	Hope Cheeks	Patricia Clover	Troy Cook
Emerson Bretouse	Jasmine Brown	Ramona Buck	Taheba Byrd	Alita-Geri Carter	Chef Moses Jackson	Samuel Clover III	Ellen Cooke
Oretha Bridgewaters-Simms	Kaye Brown	Kia Buckner	Tracey Byrd	Corryne Carter	Shaniece Cherry	Lawrence Clunie	Fern Cooke
Alisa Briggs	Lois Brown	Brandon Buie	Terria Byrd-Moody	Danielle Carter	Julia Chesley	Stacey Cobbs	Jatina Cooke
Bright Funds Foundation	Lori Brown	Wallene Bullard-Battle	Johnathan Byus	Denitra Carter	Vera Chesley	LatishaThomas Cokely	Jazmine Cooper
Sasha Brisbon	Marlynne Brown	Natalie Bullock	Virginia Caldwell	Kailah Carter	Frances Chichester	Doris Colclough	Nytika Cooper
EmRia Briscoe	Meg Brown	Rochelle Bullock	Juanakee Calhoun	Loletta Carter	Jamar Chichester	Michael Colclough	Randall Cooper
Marietta Britt	Michele Brown	Nakeshia Bullock-Taylor	Mona Calhoun	Marcia Carter	Krystle Chichester	Byra Cole	Roberta Cooper
Shelbi Britt	Missy Brown	Wayne Bumbry	Angelique Calloway	Ricardo Carter	Khara Chike	Evelyn Cole	Barbara Cooper-Jones
Kevin Broadus	Nia Brown	Elizabeth Bunn	Denyce Calloway	Tanikka Carter	Tiffanie Childs	Lorna Cole	Patricia Copelin
Jennifer Broadwater	Olivia Brown	Brittany Burgess	Donnie Calloway	Tara Carter	Wanda Childs	Cheron Coleman	Kathy Cordero
Tabitha Brockenberry	Patricia Brown	Juanita Burgess-Ginyard	CamCourt Enterprises	Valencia Carter	Dominique Chin	Cordelia Coleman	Maritza Cordero
Stacy Brogsdale-Alexander	Paula Brown	Cynthia Burke	Adero Campbell	Chandra Cartledge	Deborah Chinnapillai	Kathy Coleman	Cornerstone Captures
Gina Brooks	Sequoria Brown	Kathy Burke	Alvin Campbell	C. Bullock Cassell	Stacey Brown Chisholm	Lisa Coleman	LaSonya Corns
Jamilah Brooks	Shameka Brown	Maraya Burks	Cheryl Campbell	Avis Catchings	Chrystal Christian	Majida Coleman	Cheryl Cornwall
Janay Brooks	Stacia Brown	Marisa Burnett	Deneane Campbell	Ingrid Catlin	Kellee Christian	Richelle Coleman	CorpCom Training Center
Janice Brooks	Tarnisha Brown	Adrian Burney	Jasmine Campbell	LaTanya Catron	Stephanie Christian	Senior Coleman	Danyale Corradi
Karen Brooks	Tinneatrice Brown	Anna Burns	Jason Campbell	Gerald Caver	Jhynell Christy	Tracie Coleman	Aishia Correll
Norma Brooks	Traci Brown	Rachel Burrows	Stephanie Campbell	Nakita Chambers	Erricka Chung	Ngima Coleman Sr.	Calvin Coston, Jr
Taukeya Brooks	Traci M. Brown	Barbara Burton	Christina Camps	Safiya Chambers	Jane Clare	Quentin Coles	Marsha Cottman-Rowe
Valencia Brooks-Jones	Valerie Brown	Haleema Burton	Iris Cancel	Florence Champagne	Gary Clark	Jessica Coley	Rachel Couch
Yvette Brooks-Williams	Wendy Brown	Sharon Burton	Kanta Candogan	Tonya Champion	Latanya Clark	Judy Coley	Deltha Cousar-Jeffries
Alex Brown	Kia Brown-Dudley	Vaquarius Burton	Tawanda Cannon	Henry Chancler Jr.	Patricia Clark	Terie Coley	Shannon Cowart
Ben Brown	Patricia Browne	Larry Butler	Kara Carmichael	Jacqueline Chandler	Vict Clark	College Hunks Prince George's County	Kristen Cox
Brittany Brown	Monica Brown-Lipscomb	LeJuan Butler	Minnie Carmichael	Aaron Chaplin	Willie Clark	Adrienne Collier	Ashley Craig
Bruce Brown	Denise Brown-Miller	Michelle Butler	Caroline LeVere Consulting LLC	Isaiah Chaplin	Danielle Clarke	Charlene Collier	Margarette Crawford
Coressa Brown	Susan Brown-Watson	Nanette Butler	Francesca Carpenter	Jocelyn Chaplin	Daryl Clarke	Cheryl Collins	Marvin Crawford
Danielle Brown	Sonja Bruce	Nicole Butler	Beverly Carpenter-Nickens	Ann Chapman	Elanda Clarke	Kathleen Collins	Melanie Crawford
Davon Brown	Margaret Brumfield-Thomas	Shannon Butler	Herbert Carr	Lisa Chapman	Robin Clarke	Nicole Collins	Orinda Crawford

Alpha Donor Level (\$1.00 - \$499.99)

Joseph Creasy	LaTricia Davenport	Marseille Deese	Susan Dortch	Titina Eason	Eta Chapter, AKA	Marion Flamer
Karen Creasy	Alexis David	Suni DeGeneste	Thurman Dortch	Eat Me Designs LLC	Asia Eubanks	Chandra Fleet
Regina Creasy	Sarah Davidson	Rashonda Dennis	Mara Doss	Ashley Echols	Sara Evans	Shirley Fletcher
Creative I Designs	Alesha Davis	Daryl Dent	Jackie Douge	Deon Edgerson-George	Shirley Evans	Sharon Fletcher (Turner)
Loreka Credle	Andrea Davis	Brittany Deskins	Antoinette Douglas	Arshan Edgerson-Mitchell	Tiffanie Evans	Tiziana Flores
Lasan Crispin	Angela Davis	Maniya Desroches	Charlotte Douglass	Lauren Edler	Express Yourself ATL	Joyce Flowers
Crichelle Crittenden	Anthony Davis	Jalicious Desserts	Dominique Dove	Beverly Edmond	Princess Facen	Linwood Floyd
Janae Crockett	Asa Davis	Sonia DeVan	Renata Dowd	Annette Edmonds	Shawna Fagbuyi	Shardae Floyd
Melissa Cromartie-Holton	Carolyn Davis	Dana Devance	Madeleine Downing	Tawanna Edmonds	Vanessa Fahie	Mary A Flynn
Kayla Cross	Constance Davis	Desiree Deville	Marcia L Dozier	Alfreda Edwards	Stephanie Faison	Patrick Flynn
Melissa Cross	Deirdre Davis	Yvonne Deweever	Lynnette Drake	Consuelo Edwards	Darlene Falk	Flyy Delivery
Evelyn Crudup	Grace Davis	TaMiya Dickerson	Veronica Drake-Butler	Farrah Edwards	Tangeryne Farley	Paulette Fogle
Dawn Cruikshank	Jada Davis	Cheryl Dickson	Sherree Draughn	Renee Edwards	Debra Farmer	Terese Fomby
Kara Crump	Justice Davis	Brustina Dillard	Roxanne Dryden Edwards	Robert Eilers	Kindall Farwell	Suilabayu Fon
Angella Cruz-Spearman	Kijafa Davis	MarleneFleming Dillon	Kim Dubard	Katrina Eisbey	Willie Faulkner	Ottira Fontaine
Dimitrus Culbreath	LaVerne Davis	Angela Dilworth	Fern Dubose	Kai Ekanem	Anne Marie Felix	Barbara Ford
Paula Cummings	Markita Davis	Andrian Dingle	Wanda Dubose	Kym Elder	Tammlerae Felton	LaTonya Ford
LaWanda Cureton	MaShana Davis	Jacqueline Dingle	Garcene Ducket	Migdalene Eley	Tammy Felton	Rhonda Ford
Carolyn Curry	Michelle Davis	Renikka Dingle	Benjamin Dudley	Brenda Eligan	Tracy Felton	Ruth Ford
Dee Curtis	Monique Davis	Cheryl Dixon	Hope Dudley	Audrey Ellerbe	Wanda Felton	Sharon Ford
Debra Curtis-Petties	Nikeshia Davis	Kellie Dixon	Shanay Dudley	John Ellington	Karen Fenner	Valeria Ford
Samantha Cutler	Sarah Davis	Kellie G. Dixon	Tenisha Duke	Nikeya Elliott	Angeloyd Fenrick	Adrian Foreman
Brandon Cyrus	Tyler Davis	Kertisha Dixon	Matthew Duncan	Alberta Ellis	Adrienne Ferguson	Danielle Fortune
Maya Cyrus	Vanessa Davis	LaRita Dixon	Anfela Dunlap	Lynn Ellis	Janet Ferguson	Flora Fortune
Sylvia Cyrus	Weptanomah Davis	Razina Dixon	Angela Dunlap	Deborah Ellison	Ursula Ferguson	Dr. Ashanti Foster
Jennelle Dabney	William Davis	Sonja Djossou	Valerie Dunn	Ricky Elum	Monique Ferrell	Tracy Foster
NPatrice DaCosta	Yvonne Davis-Robinson	DKGL Enterprises	Nashawnta Dupree	Embrace All of U Bridal	Hattie Fields	Zulekha Foulén
Carolyn Dallas	Karen Dawkins	Dionne Doby	Simone Dupree	Virgenia Embrey-Brock	Leslie Fields	Craig Fowler
Altamese Dangerfield-Williams	ReShane Dawn-Fowler	Lamar Dolby	Christina Durham	EmPower Consulting LLC	Rolonda Fields	Debra Francis
AD Daniel	Cheryl Day	Shelby Donaldson	Raquel Durham	Kimberly Ennett	Taylor Fields	Tiara Francis
Marcella Daniels	Shonnbreia Days	Barbara Dorsey	Geraldine Dyson	EntreVation, LLC	Brenda Finch	Frank M. Reid Enterprises
Michael Dantley	Sontresha Days	Bianca Dorsey	Stephanie Dyson	Rita Epps	Wanika Fisher	MarilynC. Franklin
Adelle Dantzler	Juanita Dean	Karleshia Dorsey	Ronnette Earle	Shaletta Espie	Terrenia Fitts	Sheryl Franklin
Gwendolyn Davenport	Sandy DeCruize	Norma Dorsey	LaShawn Early	Nichelle Esser	Beverley Fitzgerald	Rachel Fray
Jade Davenport	Sherene DeCruize	Helen Dortch	Billy Eason	Lauren Estep	Alisha Flachs	Chad Frazier

Alpha Donor Level (\$1.00 - \$499.99)

Dorothea Frazier	Cortney Garrison	CreativeAccentsStudio Gina Reynolds	Theresa Grant	Chelcia Greer	Deborah Hall-Greene	Tawana Harris
Juanetta Frazier	Kyle Garrison	GKSInnovations	Wanda Grant	Sharon Gregg	Diamond Dora Halton	Tiffany Harris
Jamale Frazier-Hatcher	Robert Garrison	Sharon Glasgow	Natasha Grant-Dean	Colette R. Gresham	Ernest Halton	Harris and Harris
Gina Frazier-Tomblin	Gregory Gary	Christopher Glast	Duane Graves	Ann Griffin	Damika Ham	Robin Harris-Cooper
Charla Freeland	Bertheria Gaston	Veronica Glast	Tanika Graves	Glenda Griffin	Julia Hamilton	Andrea Harrison
Airis Freeman	Felicia Gaston	Rhonda Glaude	Tasha Graves	Lynda Griffin	Leslie Hamilton	Deborah Harrison
Brittani Freeman	Youngkquia Gater	Jesse Glickstein	Amelea Gray	Ladonna Griffith-Lesesne	Lyndsay Hamilton	Faye Harrison
Gloria Freeman	Robert Gatewood	Global Charity	Dinease Gray	Rikah Grijalva	Margaret Hamilton	Jamia Harrison
Melanie Freeman	LaTasha Gatling	LaTrecia Gloster	India Gray	Cecilia Grillo	Terry Hamilton	Monique Harrison
Freeman Funeral Services	Amya Gaymon	Brandon Godwin	Marcie Gray	David Grogan	Paula Hamm	Yachica Harrison
Koshay Freeman-Arnold	Lillie Gaynor-Vessels	Brittany Goins	Pamela GRAY	Felicia Gross	Melanie Hampton	Cynthia Harrold
Crystal French	RobertL George Jr	Jennifer Golson	Harrison Grayson	Karen Grossman	Angela Hancock	Sister Harry
Jannel French	Lisa German	Rosetta Goode	Paige Grayson	Joi Grymes-Johnson	Dr.Kim Haney-Brown	Velma Hart
Stephen Friedman	Brian Geter	Savonna Gooden	Akilah K. Green	Richard Gudite	Deon Hankins	Jamie Hartnett
Michele Friend	Suzette Gherbi	Renee Goodison-Ollivierre	Ashlee Green	Laura Guillion	Hanson Family	Tiffany Harvell
Full of Fun Party Rentals DC	Ann Gibbons and Gugerty	Kendra Goodman	Denise Green	Robert Gunn	Michael Hanton	Karen Harvey
Althea Fuller	Bianca Gibson	Gregory Goodwin	Gloria Green	Aleacia Guy	Evelyn Hardin Nims	CaroleE. Hawkins
Fuller Fuller	Connie Gibson	Carolyn Gordon	Jeremy Green	Anthony Guy	Katrina Harkley	Jennifer Hawkins
Kenneth Fulmore	Consuella Gibson	Indya Gordon	Lisa Green	Carol Guy	Jamila Harley	KSheree Hawkins
Sharice Fulton	Daveisha Gibson	Khaleah Gordon	Minnedore Green	Nichole Guy	Naima Harmon	Tracey Hawkins
Robin Gaillard	Donna Gibson	S Libby Gordon	Nakeia Green	Noreta Gwynn	Cora Harper	Dawn Hawkins-Nixon
Ronda Gain	Quiana Gibson	Sanlare Gordon	Staci Green	Nicole Gyimah	Sabrina Harper	Sandra Hawthorne-Provo
James Gainey	Talysha Gibson	Roger Gore	Vera Green	Lydell Hagans, Jr.	Brenda Harrell	Lauri Hay
Janet Gaither	Wilbert Gibson	Delisa Gould	Wanda Green	Amanda Haines	Lori Harrell	Sharon Hayden
Ernestine Gales	Scarla Gilbert	Jeanette Gould	Wrenetta Green	Kismet Hairston	Amber Harrelson	Gordon Hayes
Nicole Gales	Shakeva Gilchrist	Erin Graham	Cherice R. Greene	Patricia Haith	Alethea Harris	Jannie Hayes
Keiatta Garcia	Adele Giles	Jerome Graham	DeMario Greene	Jocelyne Hakizimana	AmyJ Harris	Kashanae Hayes
Melissa Gardner	Beverly Giles	Robichaud Graham	Diana M Greene	Kia Hale	Carlise Harris	Kim Hayes
Quiana Gardner	Jessica Giles	Taylor Graham	Dijaria Greene	Aaron Hall	Jernice Harris	Pamela Hayes
Roderick Gardner	Doris Gillard	Juanteze Grammar	Janettarose Greene	Areyal Hall	LaVaul Harris	Kelley Hayes-Greenhill
Claire Garner	Geronda Gillens	Tyeana Granby	Christopher Greene TU	Brian Hall	Margaret Harris	Deana Hayes-Johnson
Garnette Consulting	Deeona Gilliam Bland	DeBorah Grant	Kelley Greenhill (Hayes)	Cynthia Hall	Marion Harris	Alanna Hayman
Lynnea Garrett	Phyllis Gillians	Delnorah Grant	Camille Greenlee	Kelly Hall	Olivia Elizabeth Harris	LoriB Hayman
Michelle Garrett	Kimbra Gillis	Pat Grant	Alma Greer	Ruby Hall	Paula Harris	Michelle Haynes
Quenton Garrett	Kina Gilmore	Sheila Grant	Andre Greer	Robin Hall-Evans	Shareese Harris	Wanda Haynes

Alpha Donor Level (\$1.00 - \$499.99)

Joan Haynesworth	Alfonza Hilliard	Darice Holmes	Carlton Hunter	Maria Jackson	Candace Johnson	Natasha Johnstone
Rhashanda Haywood	Katrina Hilliard	Sophia Holmes	Chanta Hunter	Miranda Jackson	Cecelia Johnson	Brenda Jones
Constance Hazzard	Antwyne Hines	Alice Holt	Demetrus Hunter	Shawn Jackson	Cecilia&Nathan Johnson	Carol Jones
HCD International	Aisha Hinton	Brittany Holt	Jimmea Hunter	Tonya Jackson	Channing Johnson	Connie Jones
Head to Speech Incorporated	Glenda Hinton	Shannon Holt	Laura Hunter	Linda Jackson Jones	Colby Johnson	Darissa Jones
Andrew Headd	Jennifer Hinton	Dawn Holton	Oliver Hunter	Dionne Jackson-Banks	Crystal Johnson	Dorothy Jones
Meagan Headd	Jessica Hinton	Barbara Holt-Streeter	HUSL Class of 2017	MarilynSegars Jamal	Darren Johnson	Galan Jones
Sherland Headley	Justin Hinton	Camryn Honesty	Veronica Hutchinson	Andrella James	Doreene Johnson	Gloria Jones
Ashley Hedgepeth	Nakia Hinton	Patricia Hood	Latia Hutton	Audrey James	Douglas Johnson	GretaWright Jones
Wanda Hedgepeth	Tameka Hinton-Wright	Portia Hood	IFit.KAE Herbalife	Karen James	Eric Johnson	Jerome Jones
Leslie Henderson	Shirley Hobbs	Lolita Hoover	Shawn Ifill	Michelle James	Gloria Johnson	Juanita Jones
Shellie Henderson	Brenda Hodge	Andrea Hopkins	IGO 50th Anniversary Committee	Raneene James	Kierra Johnson	Kristen Jackson Jones
Stella Henderson	April Hodges	Kathye Hopkins	IGO 58 Points of Light	Sheree James	Kimberly Johnson	LaKeita Jones
Sydney Henderson	Brittany Hodges	Sabrina Hopps	Sandra C. Ingram	Channon Jamison	Klya Johnson	Laura Jones
FeliciaL. Hendrix	Jennifer Hoffman	Anthony Horton	Laura Inniss	Chayna Jamison	Kyn Johnson	Linda Jones
Lorilyn Henley	Cherita Hogan	Lisa Horton	Iota Phi Theta	Jaspers Restaurant	LaShawn Michelle Johnson	Marcella Jones
Charles Henry	Jevaughn Hogan	Karen Hoskins	Amette Ireland	Sharon Jayson	Lauren Johnson	Nichole Jones
Lauren Henry	Doreen Hogans	Kuchkunthearak Hou	Sequola Ireland	Rachel Jefferies	Leola Johnson	Nicole Jones
Norma Henry	Johanna Hogans	SeBrina Houston	Karen Irving	Blair Jefferson	Leslie Johnson	Pat Jones
Robin H. Henry	LaJuan Holeman	Briana Howard	Tamar Isaaca	Octavia Jefferson	Maria Johnson	Shary Jones
Tonya Henry	CherriR. Holland	Marion Howard	It Takes a Village Collaborative Inc	Sheila Jefferson	Marian Johnson	Stephanie Jones
Shirleen Henry-Lewis	Gwendolyn Holland	Orin Howard	Glenn Ivey	Airienne Jeffery	Mary Johnson	Tanika Jones
Connie Henson	Lynne Holland	Patricia H. Howard-Chittams	Sheronne Ivey	Edith Jenkins	Pamela D. Johnson	Taydra Jones
Jones Curtis Herbalife	Marilyn Holland	Arvel Howerton	Charlene Ivy	Herbert Jenkins	Sabrina Johnson	Vincent Jones
Nicole Herbalife	Alesha Holliday	Phyllis Hubbard	Tiffany Izzard	Vivian Jenkins	Sandy Johnson	Virginia Jones
Terri Herbert	Crystal Hollingsworth	Cornell Huddleston	Jack and Jill of America	Brandi Jennings	Sheldon Johnson	Wanda Jones
Wayne Herbert	Kimberly Hollingsworth	Curtland Huddleston	Archie Jackson	Mycki Jennings	Stephanie Johnson	Maranda Jones-Anderson
Alesha Hernandez	Kelley Hollis	Roberto Huddleston	Cyrena Jackson	Wanda Jeter	Steven Johnson	Tanika Jones-Madden
Beverly Hicks	Rashideh Hollis	Tjuana Huddleston	Darilyn Jackson	Donna Jeter-Cage	Tanya Johnson	Jennifer Jones-Peoples
Doris Hicks	Michae Holloman	Tunisia Huddleston	Deidre Jackson	Jewel Couture Events and Design	Tori Johnson	Andrian Jordan
Meagan Hicks	Jennifer Holloway	Wendy Huddleston	Earl Jackson	Juanita Jewell	Valerie Johnson	Brian Jordan
Torsha Hicks	Tamecka Holloway	Bettie Hudson	Francena Jackson	Angelique Johnson	Veda Johnson	Cheryl Jordan
Jamie Higgins	Tatonya Holman	Charlesa Humphrey	Jasmine Jackson	Arnisha Johnson	Wendy Jo Johnson	Cortney Jordan
Annie Hill	Alice Holmes	Sheila Humphrey	Joyce Jackson	Audrey Johnson	Ruby E. Johnson-Nelson	Doris Jordan
Savannah Hill	Angela Holmes	Brenda Hunt	Lynnette Jackson	Bettie Johnson	Michelle Johnson-White	Glenn Jordan

Alpha Donor Level (\$1.00 - \$499.99)

Israel Jordan	Kenneth King	Robin Laney	Sabrina Lewis	Clyde Macasero	Nikki Martin	Elliott Mcadams
Janelle J. Jordan	Kim King	Marilyn Lanier	Wendy Lewis	Laquita Mack	Paul Martin	Ernest McAdams
Marilyn Joseph	Nichole King	Donna Lapeyrolerie	Tiva Lewter	Heather Mackall	Shanelle Martin	Micham McCain
Joyful Tasty Treatz LLC	Rayeanne King	Jennifer LaPoint	Stacy Liles	Linda Macklin	Shannon Martin	Cheyenne McCall
Portia Joyner	Wanda King	CassandraL Larkins	Kimberly Lincoln	Tonya Macon	Tania Martin	Orlinda McCall
Roy Joynes	Cassandra Kingsberry	RosemaryT Latney	Gwendolyn Lindsay	Sheree Madison-Emery	MASKEDbyMarissa	Gregg McClain
Coley Judy	Beverly Kirby	David Lawson	LaShonda Linnen	Jennifer Magerer	Brittany Mason	Kimberly McClain
Reginald & Tina Kearney	Lisa Kirkland	Kim Lawson	Angela Linton	Charity Magruder	Darryl Mason	Bonita McClenny
Darrell Kee	Nicole Kirkland	Tadarius Leak	Conchita Little	Brian Maguire	Kevin Mason	Adrienne Mcclough
Bridgette Keels	Phyllis Knight	Tracy Leake	Lesley Little	Valerie Maholmes	Kyleigh Mason	Gloria McCollum
Kamisha Kellam	John Knowles	Marcelle LeDoux	LIV Virtual Assistant	Chada Majette	Mary Mason	Kim McCracken
Aretha Kelly	Lisa Knox	Angela Lee	Jasmine Lloyd	Nikial Majors	Monika Mason	Marina McCulley
William Kelly	Koolpoems	Jared Lee	Korbyn Lloyd	Sonia Makelele	Paul Mason	Dr. Negasti McCurdie-Wright
Pamela Kelly-Gray	Dorothy Kornegay	Marie Lee	Karen Lockworth	Latisha Malcolm	Shaunta Mason	John McDaniel
Delora Kennebrew	Kreative Kreations	Martesha Lee	Gretchen Lofland	Khea Mallory	Stacey Mason	Ronnette McDaniel
Delores Lynette Kennebrew	Allison Krumsiek	Michelle Lee	Catosha Lofton-Collins	Franklyn Malone	Tamara Mason	Sheila McDaniel
Muriel Kennedy	Ebini Kwedi	Nancy Lee	Bryon Logan	Rhonda Malone	Tiffany Mason	Elijah McDavid
Nicola Kennedy	LaTonya Kyler	Shane Lee	Maya Garrett Loggins	Latika Maloy	Tracy Massey-Baker	Tim McDonald
Renee Kennedy	Mykhol LaCour	Soncyree Lee	Brian Long	Susan Mamber	Jamie Mastin	Amanda McDuffie
Stacey Kennedy	Glendale Ladson	T.B. Lee	Michael Lott	Sabrina Mangrum	Marc Mathias	Richard McGinnis
Valerie Kennedy-Robinson	Seria Lakes	Viola Lee	Joyce Loundermon	Michelle Mann	Danielle Mathis	Nanette McGraw
Gracie Kenon	Heather Lamb	Walker Lee	Love Speaks Weddings and Events	Valerie Mansfield	Marsha Mathis	Penny McGruder
Charity Keys	Vanessa Lamb	Cheryl Lee-Butler	Tamara Lovelock	Yvonne Manteen	Jeffrey Matthews	Rhonda Malone McIntyre
Ereeka Keys	Kim Lambert	Linda LeGrand	Cylia Lowe	Linda Marroum	Juanita Matthews	Ludlow McKay
Stephanie Keys	LaWanda Lambert	Karlesha Legrier	Veronica Lowe	Susan Marsh	Karen Matthews	Nicole McKay
Tanya Keys	Katrina Lamont	Kayla Lesesne	G Lowenthal	Dorshawn Marshall	Marguerite Matthews	Phyllis Mckeiver
Felicia Khaalid	Jason Lamot	Nia Lesesne	Dawn Lucas	Lauryn Marshall	Patricia Matthews	Eddie McKenney
Rashaad Khaalid	Christina Lamoureux	Rashonda Levell	Kathleen Lucas	Zach Martell	Rose Matthews	Edward McKenney
Patricia Khan	Diana Lampkin	Ashley Levy	Jemeisha Lyde	Addie L. Martin	Sabrina Matthews	Alice McKenzie
Destiny Kibalama	David Lancaster	Michael Levy	David Lyles	Ann Martin	Mildred Matthewson	Gary McKethan
Randall Kibler	Rhonda Landrau	Miyoshi Levy	Krishna Lynch	Donine Carrington Martin	Serena Matthews-Parrish	Rose McKinney-James
Anthony Kimble	Bernetta Lane	Brittney Lewis	Travis Lynch	Katrina Martin	Sheila May	Andrea McLean
Courtney Kinard	Henry Lane	Eva Lewis	Alexis Lynk	Kellee Martin	Dwight Mayes	Marsha McLean
Cody Prescott Kindle	Monica Lane	Gwendolyn Lewis	Tamika Lynn	Little Martin	Leslie Maynard	Amelia McLellan
Alicia King	Karla Laney	Helen Lewis	Chavez Mabry	Miriam Martin	Nicole Mayo	Alexandria McLeod

Alpha Donor Level (\$1.00 - \$499.99)

Karen McLeod	Beverly Mitchell	Richard B Moore	Nasser Muhammad	Nina Newton	CarlosAlberto Otal	Marcella Patrick
Pierre McLeod	Devona Mitchell	Shirley Moore	Terry Mundell	Next Frame LLC	Chrishawn Otey	G Eddie Patten
Charlesa McMahan	Faith Mitchell	Heather Moorehead	Renee Munir	Next Generation Youth Programs Inc	Sheila Outlaw	Alyssa Patterson
Mary McMillan	Melvin Mitchell	Marian Moore-Johnson	Kecia Munroe	Anita Nicholson	Melvin and Rosa Overby	Ashley Patterson
GloriaY McNair	Michelle Mitchell	Jessica Morales	Gayle Murchison	LeBrit Nickerson	Trayva Overton	Jacquelyn Patterson
Vickie McNair	Shaunta A. Mitchell	Knashawn Morales	Joe Murchison	Tamara Nims	Wilnetta Overton	Sydnee Patterson
Mary McNeely	Safiyah Mm	Brandon Morgan	Quiana Murdock	Kimberly Niono	April Owens	Meshaun Payne
Jamie Mcneill	Charles Moka	Charde Morgan	Antoinette Murphy	Ashia Nnorom	Debra Owens	PayPal Giving Fund
George McPherson	Julie Molock	Jackie Morgan	NatishaM.Greenway Murphy	Margaret Nonato	Diane Owens	Paula Payton-Tapscott
Alysia McQuire	Carolyn Monroe	Lynnee Morgan	Pamela Murphy	Tonna Norman	Vivian Owens	Lynne Peace
Diedra McQuitery	Jamel Monroe	Phyllis Morgan	Jo Ann Murray	Monica Norris	Pamela Oxendine	Shantel Peacock
Lisa McShane	Robert Monroe	Shirlena Morgan	Patricia Murray	NPHC of Prince George's County	PACE Consulting	Pearl Investors I
Anissa Mcunu	Yulonda Monroe	Yvonne Morgan	My Baby's Caddy	Jane Nwaobasi	Karen Padgett	Pearl Investors II
Alison Meads	Gay Montague	Debra Morris	Krystal Myers	Andrienne Nwude	Maureen Page	Marie Pearson
Doris Mebane	Nicole Montague	Leslie Morris	Ayanna Myrick	Sharon Oby	Dawn Paige	Wykeeta Peel
Juana Mendoza	Constance Montgomery	Natasha Morris	Gloria Myrick	ZelphiaNicole Odom	Joseph Paige	Jacqueline Peele
Doris Mercer	Sabrina Montgomery	Wendy Morris-Jackson	James Myron	Uzoaku Offoaro	Bryan Painter	Basil Pegus
Metamorphosis Enterprises LLC	Charles Montgomery II	Kenia Morrison	Nakia Gray Enterprises Inc	Nicolette Offutt	Erica Palmer	Ayana Pennant
LaTara Meyers	Angela Moody	Doris Morton	Elizabeth Nash	Uchenna Ofodile	Nancy Palmer	Matthew Perkins, Jr.
Dorothy Michael	Elliott Moody	Maurice Morton	National Engineers Week Foundation	Casey Ogden	Patricia Palmer-Carter	Bernice Perry
Arecia Mickens	Fatimah Moody	Farah Moseley	Annette Natt	Cassandra Ogden	Romina Parahoo	Nicole Perry
Valerie Middlebrooks	Garyn Moody	Sandranette Moses	Khady N'Diaye	Heidi O'Gilvie	Baronga Parker	Patrick Perry
Bernice Middleton	Angeline Moore	Tarsha Moses	Melissa Neal	Yashika Okon	Diane Parker	Paula Perry
Diamond Miller	Egola Moore	Ferne Mosley	Latonya Nealy	Olde Town Inn, LLC	Esther Parker	Petals on the Potomac
Kenyattia Miller	India Moore	Marterio Moss	Angela Nelson	Carolyn Olivacce	Gay Parker	Betty Peters
Larry Miller	Janae Moore	Patrick Moss	Candice Nelson	Gloria Oliver	Melissa Parker	DeAndrea Peters
Marnie Miller	Jasmine Moore	Josephine Moss-Nelson	Marisha Nelson	Omni Body Solutions LLC	Qiana Parker	Jan Peters
Shaun Miller	Joyce Moore	Michelle Moten	Vivian Nelson	Lacey O'Neal	Sherrie Parker	Linda Peters
Tracie Miller	Keith Moore	Group Motiso	Carolyn Nesmith	Flecha Organ	Alicia Parks	Taylor Peters
Denise Miller-Brown	Kelly Moore	Nicole Moultrie	Nancy Newbold	Origination Redefined	Carole Parrish	Ary Peterson
Brittani Mims	KitabT Moore	Bora Mpinja	Corliss Newhouse	Lavdena Orr	DaLawn Parrish	Carol Peterson
Marsha Mims-Word	Larry Moore	Ms. TabStyles	Camille Newman	LouDina Orr	Michael Parrish	Danielle Peterson
Chrystal Mincey	Michele Moore	Echo Muhammad	Niki Newman-Brown	Arlene Ortega	Serena Parrish	Joy Peterson
Juliette Mine	Neekia Moore	Jazmin Muhammad	Burgess Newton	Jennifer Ortega	Carla Partlow	Ruth Peterson
Kamry Minor	Portia Moore	Michelle Muhammad	Cynthia Newton	P Osborne	Clara Pate	Pamela Pettyjohn

Alpha Donor Level (\$1.00 - \$499.99)

PGC Men Can Cook	Johnathan Pratt	Pamela Ransome	Kristin Riddick	Patricia Robinson	Pamela Ruffin	LaTasha Scott
Ambrose Phillips	Rhonda Pratt	Yvette Rawley	R.Lucia Riddle	Rebecca Robinson	Sherry Ruffin	LaVerne Scott
Angelique Marie Phillips	Precious Pearls - IGO 1995	Renee Rawls	Ride Higher Ground LLC	Terri Robinson	Amy Rufino	Lola Scott
Chandois Phillips	Debra Evans Price	Kisha Reaves	Joi Ridley	Uri Robinson	Jennelle Rush	Nicholas Scott
Aaron Phoenix	Jocelyn Price	Brandee Reed	Crystal Riley	Yvette Robinson	Alexandra Russell	Rodney Scott
India Pinkney	Sonia H. Price	Katrina Reed	David Riley	Bettie Robinson Gibbs	Cheryl Russell	Stanita Scott
Virginia Pinkney	PriceWaterhouseCoopers LLP	Marja Lindsey Reed	Shirelle Ripetta	Mary Robinson-Carter	Greg Russell	Tia Scott
Terita Pitt	Maryan Prince	Robert Reed, Jr	Rita's Ice	Blair Robinson-Price	Kesa Russell	Tiffany Scott
Terrayne Pittman	Monica Prince	Lavonn Reedy-Thomas	David Rivera	Ayana Rochee	Teresa Russell	William Scott
Victoria Pittman	Robynne Washington Prince	Kenya Reese	John Rivers	Lakeeya Rodriguez	Lorelle Ryan	Carla Scott-Jackson
Natalie Pitts	Robin Printis	Monique Reese	Cris Riviere	Monica Roebuck	Mamie Ryant	Tyrone and Iris Searles Tryone
Mary Pivar	Andre Proctor	Reggie Belcher State Farm	Kirsten Roach	Ashley Rogers	Theona Salmon-Ponder	Frenchy Segears
Roberta Plater	Jatoya Proctor	May Reid	Dawnielle Robb	Emily Rogers	Lisa Sampson	Kimberly Sellers
Play on Words Therapy, Inc.	Kay Proctor	Sheila Reid	Nakia Robbins	Kaleena Rogers-Hoover	Jessica Samuels-Shields	Kristi Sellers
Tommeka Pleasure	Jonquil V. Prophet	Yvonne Reid	Andrea Roberson	Ariana Roland	Mavis Sanders	Doris Senabaugh
Bertha Pledger	Gordon Prout	Isabel Reiff	F. Alexis Roberson	Charmaine Roman	Nancy Sanders	Ngima Senior
Granges Plummer	LaTosha Providence	Leon Reynolds	Keisha Roberson	Christina Rome	Ivan Santos	Glynis Senn
Sheila Poindexter	Barbara Purdie	Reesa Reynolds	Aundra Roberts	Cindy Romero	David Saunders	Jousett Service
Kathy Pointer	Patricia Quarles	Shelia Reynolds	Elizabeth Roberts	Christopher Rooks	Crystal Savoy	Latoya Sessoms
Theona Salmon Ponder	Nicole Quick	Lisa Reynoso	Paul Roberts	Erica Rooks	L Diane Savoy	Andria Settles
Patricia Pope	Trina Quirindongo	Marian Rhodes	Cheryl Robertson	Maria Rosa	Traci Savoy	Sylvia Shabaze
Rhonda Pope	R & R Blend	Carlene Rice	Tashawna Robertson	Rosa's Greek Boutique	Tina Savoy-Ross	Winnie Shabazz
Tiara Pope	Lisa Rahman	Lawan Rice	Amani Robinson	Cynthia Roscoe	Loren Saxton	Vivian Shannon-Ramsey
Laura Poppendeck	Rainbow Promotions of Alpha Legacy LLC	Louise Rice	Andristine Robinson	Ingrid Roseborough	Tanyana Saxton	LaShawn Sharp
Sameano Porchea Bond	Lorraine Ramirez	Robin Rice	Arthur Robinson	Danielle Rosemond	Lois Scales	R.Nicole Sharp
Linda Porter	Steve Ramirez	Rosalyn Rice-Harris	Brooke Robinson	Monique Rosier	Scalp-Ease	Brian Shaw
Sequoia Porter	Carlos Ramos	Delphia Rich	Christina Robinson	Kimberly Ross	Shannon Scates	Evelyn Shaw
Poseidon Industries inc	Ernesto Ramos	Angela Richardson	Crystal Robinson	Stephanie Ross	Janet Schaffel	Nicole Shaw
Schalette Poteat	Merci Ramos	Britney Richardson	Dana Robinson	Deborah Rountree	William Schmidt	Francene Shelton
Dennine Powe	Ruth Ramos	Corene Richardson	Destiny Robinson	Natasha Rountree	Alice Scipio	Jacqueline Shelton
Catherine Powell	Natalie Rance	Marilyn Richardson	Frances Robinson	LaTasha Rowe	Angela P. Scott	Marie Shelton
Keisila Powell	Desiree Rand	Sherry Richardson	Jeneva Robinson	Natasha Rozier	Belinda Scott	Delphine Shepard
ValorieB. Powell	Johnnie Randle	Shetia Richardson	Julia Robinson	Deonne Rucker	Carla Scott	Leslie Sherard
Keisha Powell	Phyllis Randle	Victoria Richardson	Kim Robinson	Marian Rucker-Shamu	Joy Scott	Edward Shields
Karleen Powell DM	Stephanie Randle	Sidney Ricks	Kynan Robinson	Ganiat Rufai	Keila Scott	Tanya Shields

Alpha Donor Level (\$1.00 - \$499.99)

Shipley & Horne PA	Kimberly Smith	Angel Spears	Stacey Stewart	Lisa Taylor	Lenan Thomas	Camille Titus
Tongia Shirer-La Fave	Krystil Smith	Debra Speed	Wilma Stewart	Lori Taylor	Roger Thomas	Margie Tolder
Anita Simmons	Latoya Smith	Danay Spencer	Kristen Stierwalt-Huff	Michelle Taylor	Tammy Thomas	Karen Toles
Keith Simmons	Makita Smith	Julian Spencer	Sydney Stinson	Monica Taylor	Terrie Thomas	Chester Toney
Margie Simmons	Malcolm Smith	Mark Spencer	Alberta J Stith	Shirley Taylor	Theressa Thomas	Aviana Victoria Tongol
Rosina Simmons	Mieshay Smith	Karen Spencer-Patrick	Denise StJames	Tim Taylor	Toni Thomas	Kathryn Torrence
Janee Simms	Mishaun Smith	Laketa Spinks	Kevin Stokes	TAYLORED	Valerie Thomas	Leigh Torrence
Rachel Simms	Monique Smith	Deborah Spriggs	Myesha Stokes	Tea Rose Connection Enterprises	Victorie Thomas	Mary Torrence
Serena Simms	Ray Smith	Andrea Springer	Mabel Stoll	Edward Terry	Zachary Thomas	Total Wellness Medical Center
Teresa Simms	Regina Smith	Chasisty Springs	Tamara Stone	Jasmine Terry	Zoe Thomas	Robyn Towles
Shoes Simply	Regine Smith	Deneen Spruill	Tressie Stout	Texas Roadhouse	Alexis Thompson	Donna Townsend
Kimberly Simpson	Sharnae Smith	Megan Stamper	GINNEH STOWE	Randall Thames	Cheri Thompson	NaTika Townsend
Yvette Simpson	Shelly Smith	Ann Stamps	Margaret Stowe	The 100 Fathers Inc	Cheryl Thompson	Valerie Toyer
Bethany Sims	Terri Smith	Desiree Steele	Annabelle Strayhorn	The AAFIYAH Project NFP	Courtney Thompson	TPW Associates
Mellanese B. Sims	Toni Smith	Denise Stephenson	Elizabeth Stringer	The Azalea Suite	Cynthia Thompson	Candice Tranks
Alvenia Singleton	Tuwanda Smith	Natalie Stephenson	Geronda Stroman	The Black Label Collection	Debbie Thompson	Shanna Travis
D.Kim Singleton	Tyrone Smith	Wayne Stephenson	Tracee Strum-Gilliam	The Bundle Society	Donnetta Thompson	Tri-Logistics
Kimberly Singleton	Wanda Smith	Earl Stevens	Joann Sturdivant-Lyles	The Crafthtree Den	Doris Thompson	Adrienne Troilo
Kendra Slack	Wilma Smith	Jovan Stevens	Carla Suesberry Jackson	The Fitzpatrick Group	Karen Thompson	Shawn Trotter
Slaying Self Doubt	Audrey Smith	Lydia Stevens	Lesha Sugay	The K Foundation	Kenya Thompson	Sandra Trueheart
Sherri V Small	Angela Smith-Ali	Andre Stewart	Rhonda Summey	The Paul Joseph Company	Lisa Thompson	Shirley Trueheart
Barbara Smith	Eric Smith II	Aterica Stewart	Rhonda Swann	The Place Lounge	Michele M Thompson	Alan Truex
Betty Smith	Tiffanie Smith-Johnson	Camille Stewart	Connie Swiner III	The Williams Group	Rachel Thompson	DebraL Truhart
Dashia Smith	Sheila Smoot	Darryn Stewart	Kevin Sydnor	Suzanne Theodore	Richard Thompson	Andrea Tuck
Dawn Smith	Danielle Smothers	Dolly Stewart	Shelly Sydnor-Reed	Carla Thomas	Tracy Thompson	Alethia Tucker
Dennis Smith	Sneaks2Heelz	Jesse Stewart	Synergy Inc.	Carolyn Thomas	Victoria Thornton	Ahkeem Turner
Diane Smith	Lisa Sneed	Joan Stewart	Onika Tjervis	Daniel Thomas	Audrey Thurman	Henry Turner
Dontrell Smith	Jacqueline Snowden	Kim Stewart	T. J Holt Electric	Debyii Thomas	Donna Thurston	JoAnn Turner
Earl Smith, Jr.	Isaac Solomon	Kristina Stewart	Reginald Tabor	Dolores Thomas	Tamara Thweatt	Keiatta Turner
Ebony Smith	Deidra Sorrell	Latrice Stewart	Harriet Tate	Ebony Thomas	Jessica Tibbs	Tyeana Turner
Freddie Smith	Karen Sosnoski	Lucritia Stewart	Ixchel Tate	Emma Thomas	Regionald Tiernan	Winifred Turner
Genevera Smith	Southern Prince George's County Community Charities Inc.	Niambi Stewart	Addie Taylor	Ester Thomas	Donald Tilghman	Morgan Tutt
Geraldine Smith	Sovereign Personal Services	Pearl Stewart	Agnes Taylor	Gloria Thomas	Deborah Ellis Timberlake	Patricia Tutt
JD Smith	Mark Sparger	Priscilla Stewart	Danielle Taylor	Jennie Thomas	Nailah Ellis Timberlake	Andrea Twitty
Kamry Smith	Davina Sparks	Sheri Stewart	Dominique Taylor	Lavonne Thomas	Latrece Timmons	Beverly Twitty

Alpha Donor Level (\$1.00 - \$499.99)

TWP Associates	Jacqueline Walker	Joyce Washington	Yvonne West	Andrea R Wiggins	Kendra Williams	Anissa Wilson	Kendra Woodbury
Ivory Twyman	Lakeisha Walker	Kristen Washington	Floris Weston	Katerra Wiggins	Kimberly Williams	Carmen Wilson	Deidre Woodland
Kiyah Tyler	Monique Walker	Marta Washington	Carmen Wharton	Michael Wiggins	Lauren Williams	Daphne Wilson	Dominique Woodward
Rukaiyah J Tyler	Naomi Walker	Michele Washington	Lauren Wheeler	Rosalynn Holder Wiggins	Liana Williams	Dashia Wilson	Iesha Woodward
Winona Tyler	Natalie Walker	Ora Bell W Washington	Kandice Whitaker	Shilonda Wiggins	Linda Williams	Davia Wilson	Carol Woody
Patricia Tynes	Patrice Walker	Steven Washington	Ashley White	DaNika Wigglesworth	Lindsey Williams	Dori Wilson	Tracy Worley
Jennifer Ubiera	Paula Walker	Varnell J Washington	Brennen White	Adrian Wilcox	Lisa Williams	Emily S Wilson	J'mi Worthen
United Way of Nat'l Cap. Area	Vickie Walker	Kimberlyn Waterman	Cleopatra White	Azana Wiley	Lonzena C Williams	Jane M Wilson	Kendra Worthy
Veda Usilton	Dareth Wallace	Ashley Waters	Dawna White	Carmen Wilkins	Maureen Williams	Latanza Wilson	Mildred Worthy
Ruben Vailes	Jasmine Wallace	Benjamin Watkins	Deborah White	Heath Wilkins	Michelle Williams	Lauren Wilson	Robert Worthy
Kimberly Valentine	Maria Wallace	Kristia Watkins	Edith White	Yvette Wilkins	Mon Williams	Robert Wilson	Robert Worthy II
Johanna Valladares	Benita Walls	Paulette Watkins	Joanne White	Bettye Wilkinson	Monique Williams	Rose Wilson	Traketa Wray
Corey Vaughn	Karen Walls	Shari Watkins	Joyce White	Kevin Wilkinson	Paul Williams	Shana Wilson	Latonya Wright
Courtney Vaughn	Faye Walton	Tranda Watkins Graham	Lauren White	Ada Williams	Ralph Williams	Lekha Wilson-Mouling	Tameka Wright
Janet Vaughn	Mary Walton	Karen Watkins-Lewis	Robert White	Alberta B. Williams	Remeta Williams	Consuelo Wilson-Pettigrew	Taylor Wright
Judith Vaughn	Melissa Walton	Chanel Watson	Samuel White	Angela Williams	Samantha Williams	Brandy Wimbush	Tracy Wright
Dominique Veney	Sean Walton	Charlisa Watson	Shauna White	Angelique Williams	Shelandria J. Williams	Tekia Winder	Walter Wright
Priscilla Verdun	Shaundra Walton	Eric Watson	Sheila White	Barbara Williams	Shermanda Williams	Myra Winding	Wilma Wright
ViaSolutions LLC	Tkykia Warden	Kevin Watson	Susan White	Caleb Williams	Shirley Williams	Diedre Windsor	Carolyn Wright Gordon
VibeNation	Rochelle Ware	Rachel Watson	Veronica White	Cecily Williams	Steven Williams	Steve Winner	Suzette Wurie
Tomeko Vick	Theresa Ware	Brenda Watts	Katrina White-Sneed	Charles Williams	Terri Williams	Valecia Winston	Velma Wyman
Virtuous Shea Butter	Nicole Warner	Teri Weathers	Deborah Whitfield	Connie S Williams	Terry Williams	Stacy Winters	Laila Yates
Anthony Vitali	Charles Warring	Alecia Weaver	Stephanie Whitfield	Deiondria Williams	Theldora Williams	Stacy Wiseman	Ybrag
Geroma Void	Celia Washington	Megan Weaver	Amber Whitman	Ebonie Williams	Tiffany Williams	Toi Witcher	Wyvetra Yeldell
LaTasha Waddy	Charles L Washington	Jamila Webb	Derrick Whitman	Erica Williams	Travolta Williams	James Womack	Glen Yonkers Jr
Dal Wade	Cornell Washington	Katina Webster	Linda Whittaker	Florrie Williams	Vivian Williams	Janet Womack	Kathy Yorkshire
Karen Wade	Cyndi Washington	Lois Weinberg	Thomas Whittaker	Ianthya Williams	Wanda Williams	Verna Womack-Woods	Aaron Young
Sydney Wade	Deidre Washington	Breana Weldon	Wendy Whittaker	Irish Williams	Whitney Williams	Consuela Wonnum	Kimberly Young
Alaka Wali	Derrick Washington	Matoakee Wellman	Jennifer Whitten	Jacqueline Williams	Mercia Williams-Murray	Jonathan Wood	Nykedia Young
Arnetha Walker	Dr. Patrick Washington	George Wells	Cynthia Whittenburg	JacQuetta Williams	Russell M Williamson	Lisa Wood	Trinette Young
Ashley Walker	Ernest Washington	Nicole Wescott	Scarlette Whyte	Jewel Williams	Lisa Willis	Stephanie Wood	Colette Youngblood
Bernadine Walker	Gloria Washington	Debbie Wesley	Jean Wicks	Joan Williams	Ryan Willis	Taylor Wood	Tia Younger
Britney Walker	James Washington	Donna West	Adrienne Wiggins	Kanika Williams	Melissa Silva Wills	Simone Woodard	Chrystal Young-Johnson
Desiree Walker	Jennifer Washington	Glenda West	Aja Wiggins	Katrina Williams	Alesha Wilson	Suella Woodard	Sharon Zealey